



# 2111 Hartford Road

Hampton, VA 23666

## PROPERTY HIGHLIGHTS

**Suite B: 1,528 SF**

**\$17.00/SF, net of utilities and janitorial**

Current dental office – all dental equipment to remain

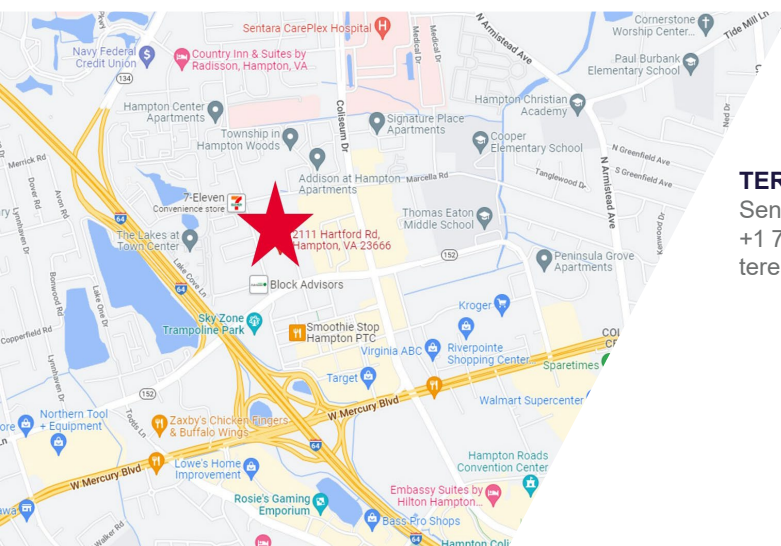
Suite could be restored to general office use

Located in the Coliseum Central District

Ample parking

Directory signage on street

Great location for medical/dental or general office use



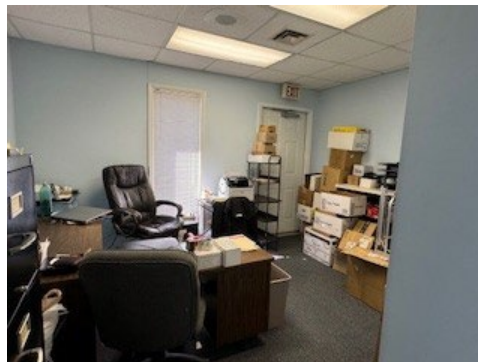
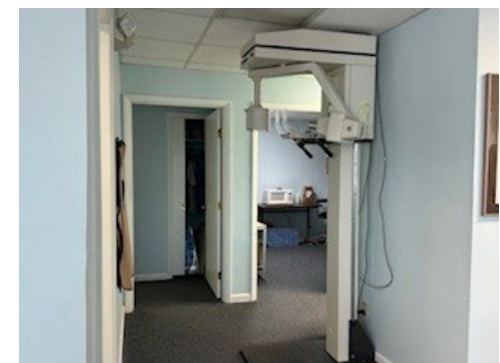
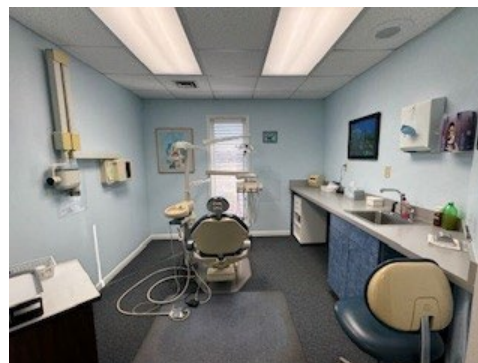
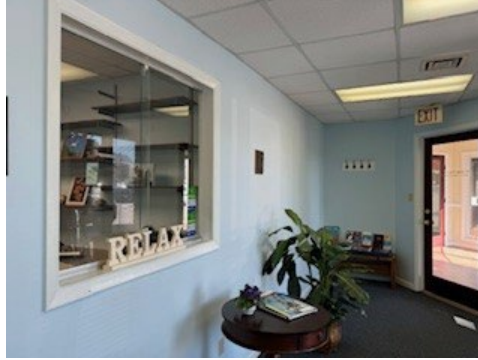
**TERESA NETTLES**  
Senior Vice President  
+1 757 873 9268  
[teresa.nettles@thalhimer.com](mailto:teresa.nettles@thalhimer.com)

One BayPort Way, Suite 100  
Newport News, Virginia  
Main +1 757 873 2900  
[thalhimer.com](http://thalhimer.com)



# 2111 Hartford Road

Hampton, VA 23666



**TERESA NETTLES**

Senior Vice President

+1 757 873 9268

[teresa,nettles@thalhimer.com](mailto:teresa,nettles@thalhimer.com)

One BayPort Way, Suite 100

Newport News, Virginia

Main +1 757 873 2900

[thalhimer.com](http://thalhimer.com)

*Independently Owned and Operated / A Member of the Cushman & Wakefield Alliance*

*Cushman & Wakefield | Thalhimer © 2025. No warranty or representation, express or implied, is made to the accuracy or completeness of the information contained herein, and same is submitted subject to errors, omissions, change of price, rental or other conditions, withdrawal without notice, and to any special listing conditions imposed by the property owner(s). As applicable, we make no representation as to the condition of the property (or properties) in question.*