

# OPERATING SELF-SERVICE CAR WASH

**3600 George Washington Hwy**

Portsmouth, VA 23704



**\$445,000**

SALE PRICE

**±0.95 ACRE**

TOTAL SITE SIZE

**GMU**

ZONING

## HIGHLIGHTS



### OPERATING SELF-SERVICE

TRUCK, CAR, & DOG WASHING  
FACILITY



### SIGNALIZED CORNER



### POSSIBLE REDEVELOPMENT SITE



### IDEAL FOR RETAIL

FAST FOOD, OFFICE, OFFICE/WAREHOUSE,  
AUTOMOTIVE SALES, & MORE



### HIGH TRAFFIC COUNTS

22,920 VPD ON GEORGE WASHINGTON &  
12,766 VPD ON FREDERICK BLVD



**Tom Dana**

Vice President

757 499 2894

[tom.dana@thalhimer.com](mailto:tom.dana@thalhimer.com)

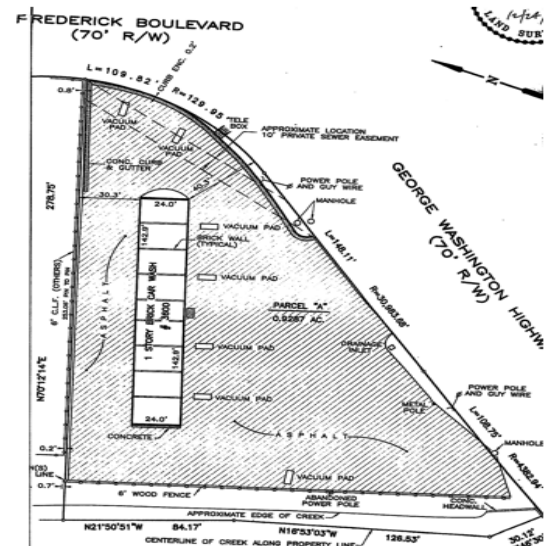


CUSHMAN &  
WAKEFIELD

**THALHIMER**



# PROPERTY SITE PLAN



	1 Mile	2 Miles	3 Miles
2022 Population	13,422	90,587	224,002
2022 Households	4,841	35,558	90,268
2022 Average Household Income	\$60,622	\$67,880	\$77,154

**Tom Dana**  
Vice President  
757 499 2894  
[tom.dana@thalhimer.com](mailto:tom.dana@thalhimer.com)



**CUSHMAN &  
WAKEFIELD**

**THALHIMER**

Independently Owned and Operated / A Member of the Cushman & Wakefield Alliance

Cushman Wakefield | Thalhimer © 2025 No warranty or representation, express or implied, is made to the accuracy or completeness of the information contained herein, and same is submitted subject to errors, omissions, change of price, rental or other conditions, withdrawal without notice, and to any special listing conditions, imposed by the property owner(s). As applicable, we make no representation as to the condition of the property (or properties) in question.