

428 MCLAWS CIRCLE

Williamsburg, Virginia

2,326 SF SPACE AVAILABLE | FOR LEASE



Andy Dallas, CCIM, SIOR | andy.dallas@thalhimer.com | 757 873 3661



Independently Owned and Operated / A Member of the Cushman & Wakefield Alliance

Cushman & Wakefield | Thalhimer © 2025. No warranty or representation, express or implied, is made to the accuracy or completeness of the information contained herein, and same is submitted subject to errors, omissions, change of price, rental or other conditions, withdrawal without notice, and to any special listing conditions imposed by the property owner(s). As applicable, we make no representation as to the condition of the property (or properties) in question.

428 MCLAWS CIRCLE

Williamsburg, Virginia

2,326 SF SPACE AVAILABLE | FOR LEASE

COMMENTS

- Prominent Class A office for lease
- Suite 204: \pm 2,326 SF
- Rate: \$19.00/SF, tenant pays utilities and janitorial
- Landlord pays common area janitorial, condo association dues and real estate taxes
- A bright, inviting space with a functional floor plan design
- Elegant lobby with common restrooms
- Easy to find location with identifiable “Wells Fargo Advisors”
- Abundant parking
- Exterior signage on building pedestal sign

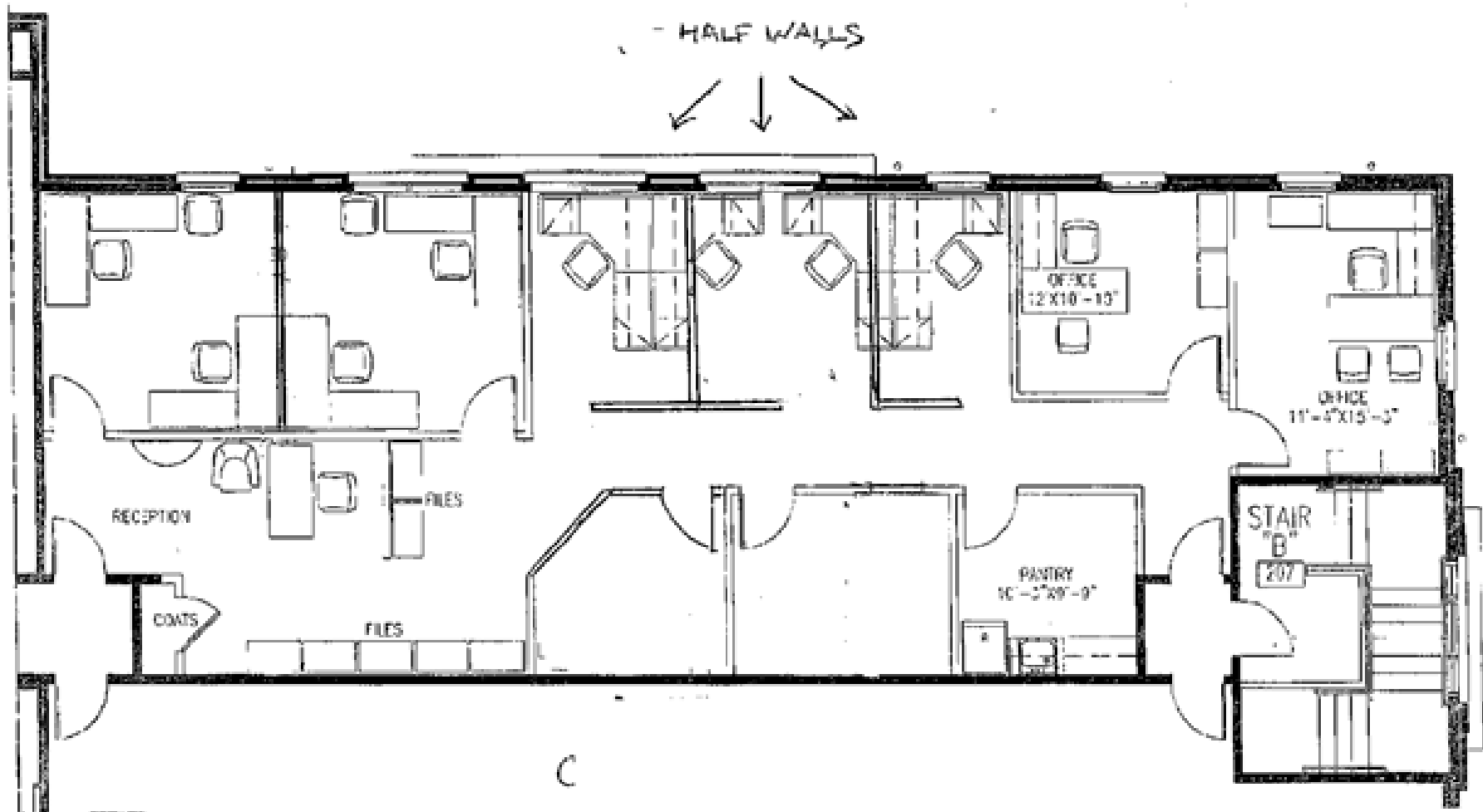


428 MCLAWS CIRCLE

Williamsburg, Virginia

SUITE 204

2,326 SF SPACE AVAILABLE | FOR LEASE



428 MCLAWS CIRCLE

Williamsburg, Virginia

NEIGHBORHOOD PLAN

2,326 SF SPACE AVAILABLE | FOR LEASE



428 MCLAWS CIRCLE

Williamsburg, Virginia

For more information, please contact:

Andy Dallas, CCIM, SIOR | andy.dallas@thalhimer.com | 757 873 3661



One BayPort Way
Suite 100
Newport News, VA 23606
thalhimer.com

Independently Owned and Operated / A Member of the Cushman & Wakefield Alliance

Cushman & Wakefield | Thalhimer © 2025. No warranty or representation, express or implied, is made to the accuracy or completeness of the information contained herein, and same is submitted subject to errors, omissions, change of price, rental or other conditions, withdrawal without notice, and to any special listing conditions imposed by the property owner(s). As applicable, we make no representation as to the condition of the property (or properties) in question.