

FOR LEASE

601 Southlake Boulevard

Richmond, VA 23226 | Chesterfield County



PROPERTY FEATURES



- Turnkey school/Daycare opportunity
- 17,694 SF
- 2.06 acres, great outdoor area
- Easy access, great visibility
- On site parking
- Asking \$30.00 SF/NNN

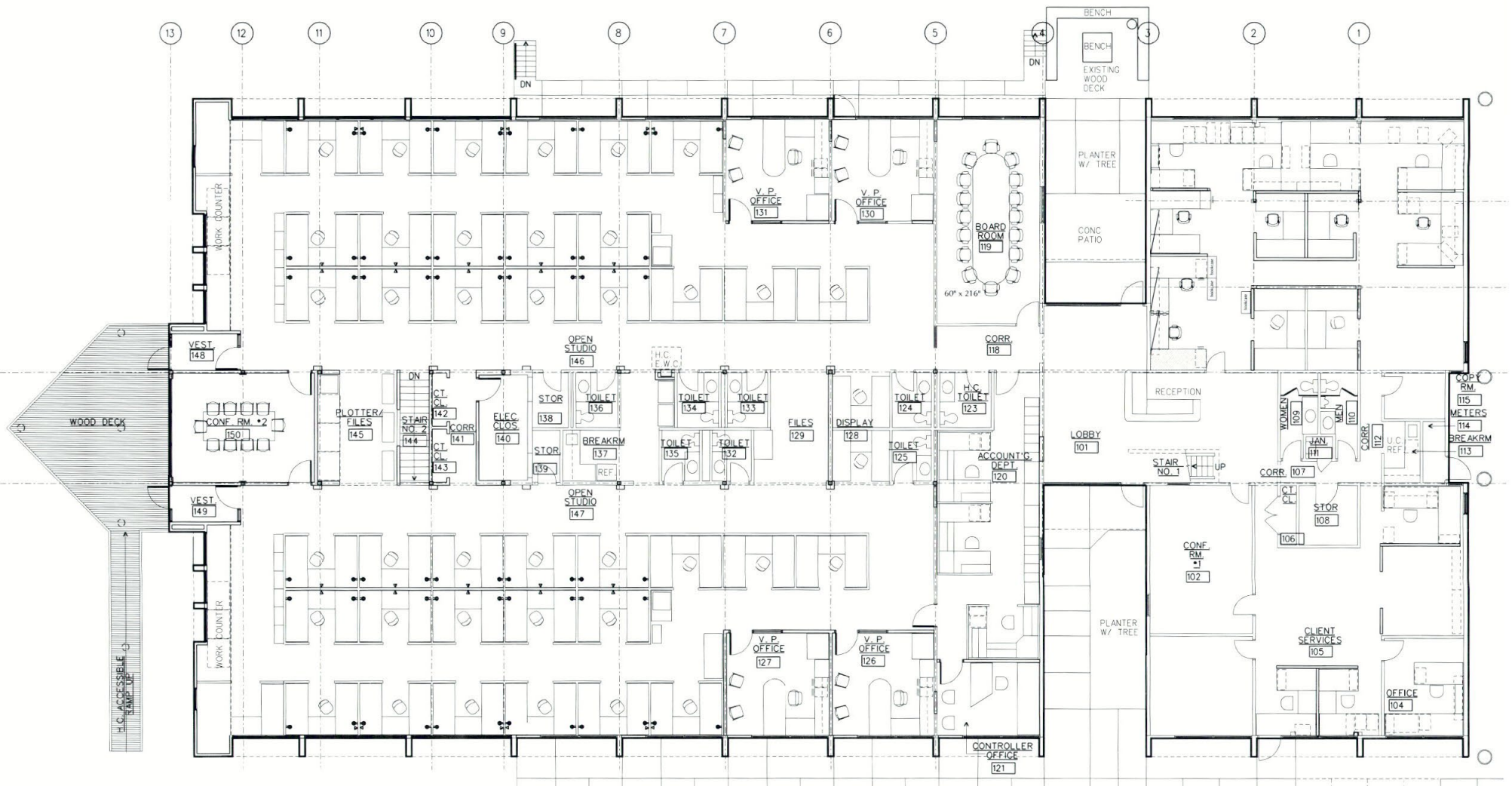
SCAN QR CODE FOR
INTERIOR VIDEO



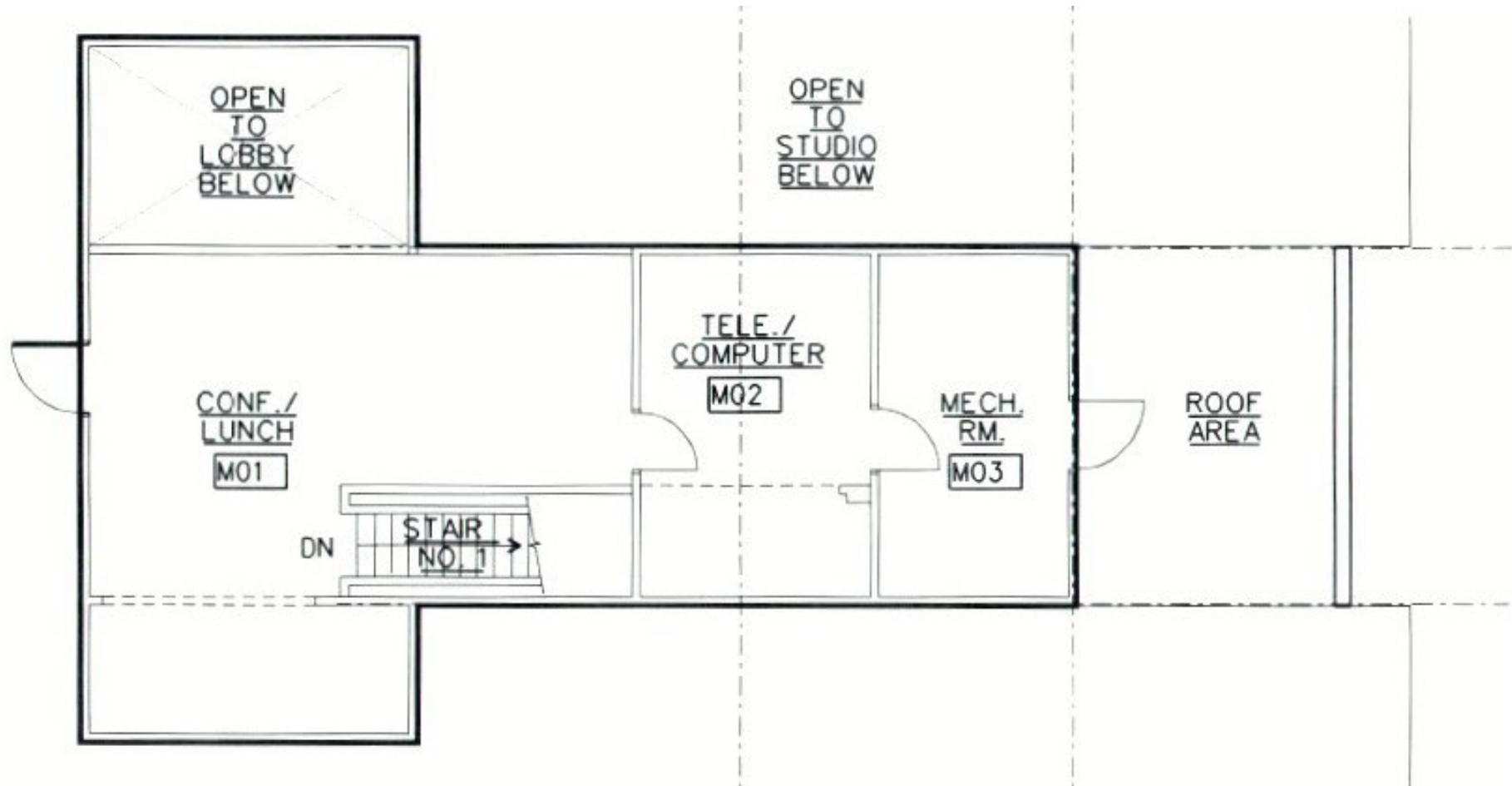
DEMOGRAPHICS

	2 Mile	3 Miles	5 Miles
Population	27,905	61,026	145,667
No. of Households	10,910	23,692	57,932
Avg. Household Income	\$100,970	\$112,505	\$108,450
Daytime Population	29,450	36,714	79,653

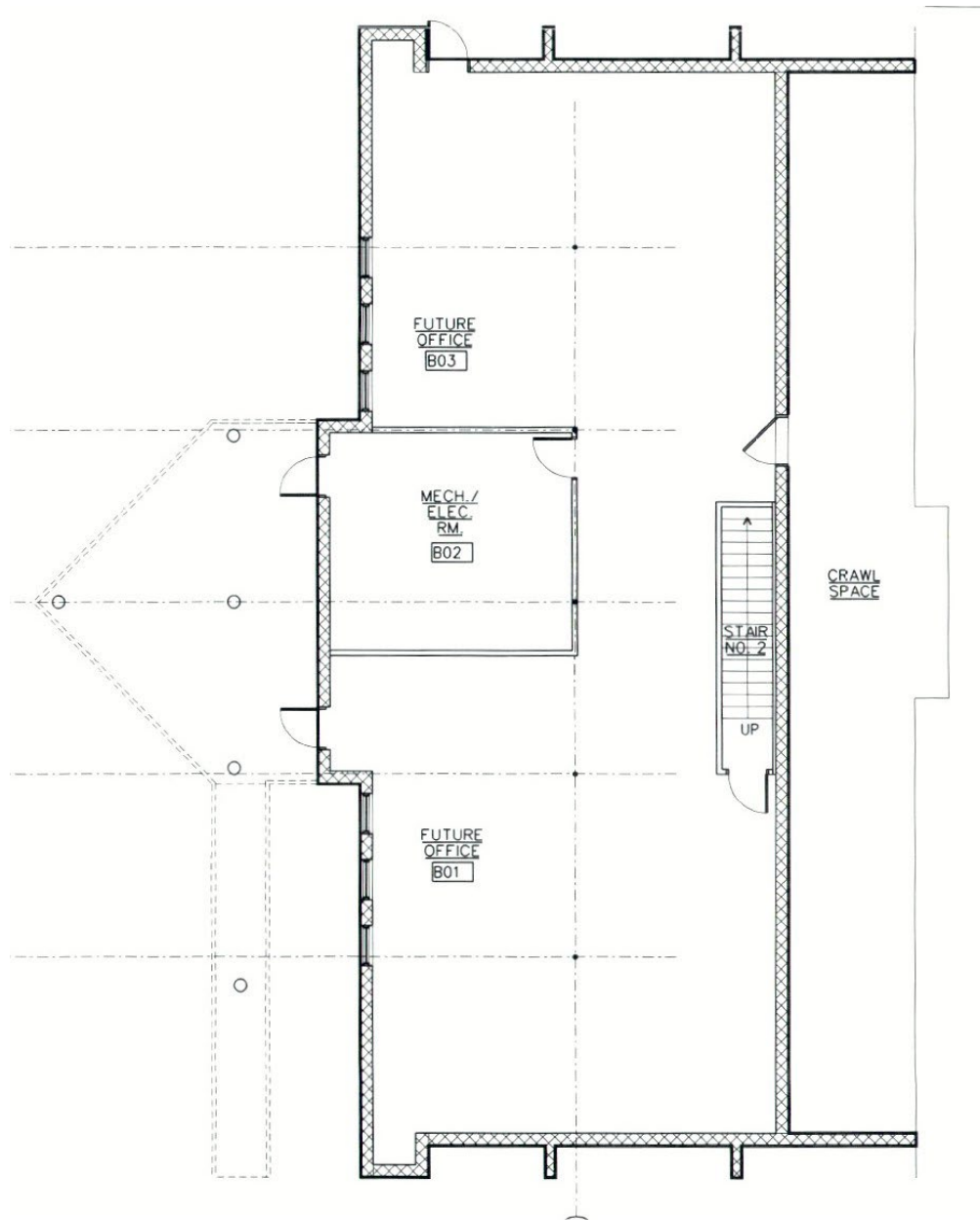
MAIN FLOOR PLAN



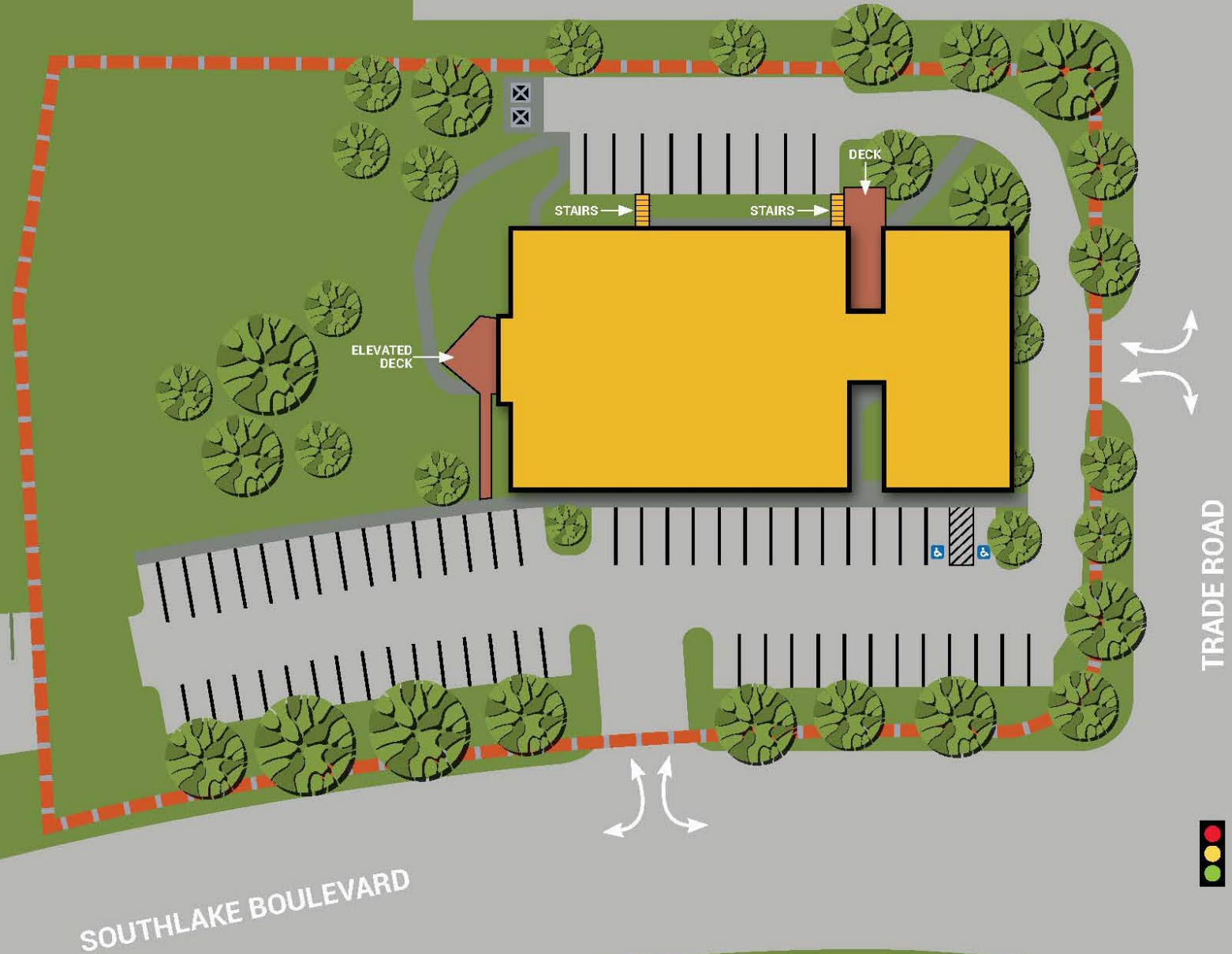
MEZZANINE PLAN



LOWER LEVEL FLOOR PLAN



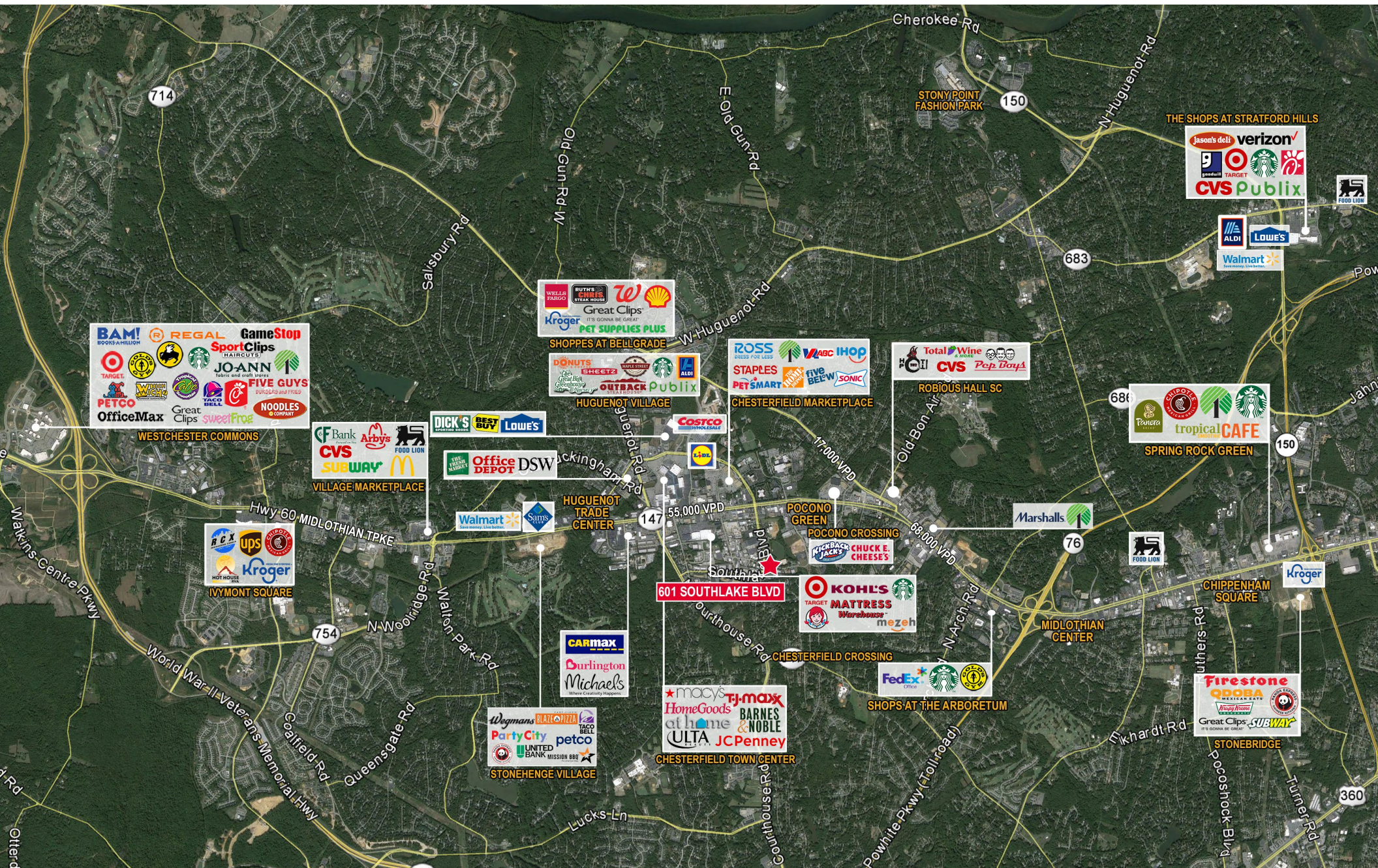
SITE PLAN



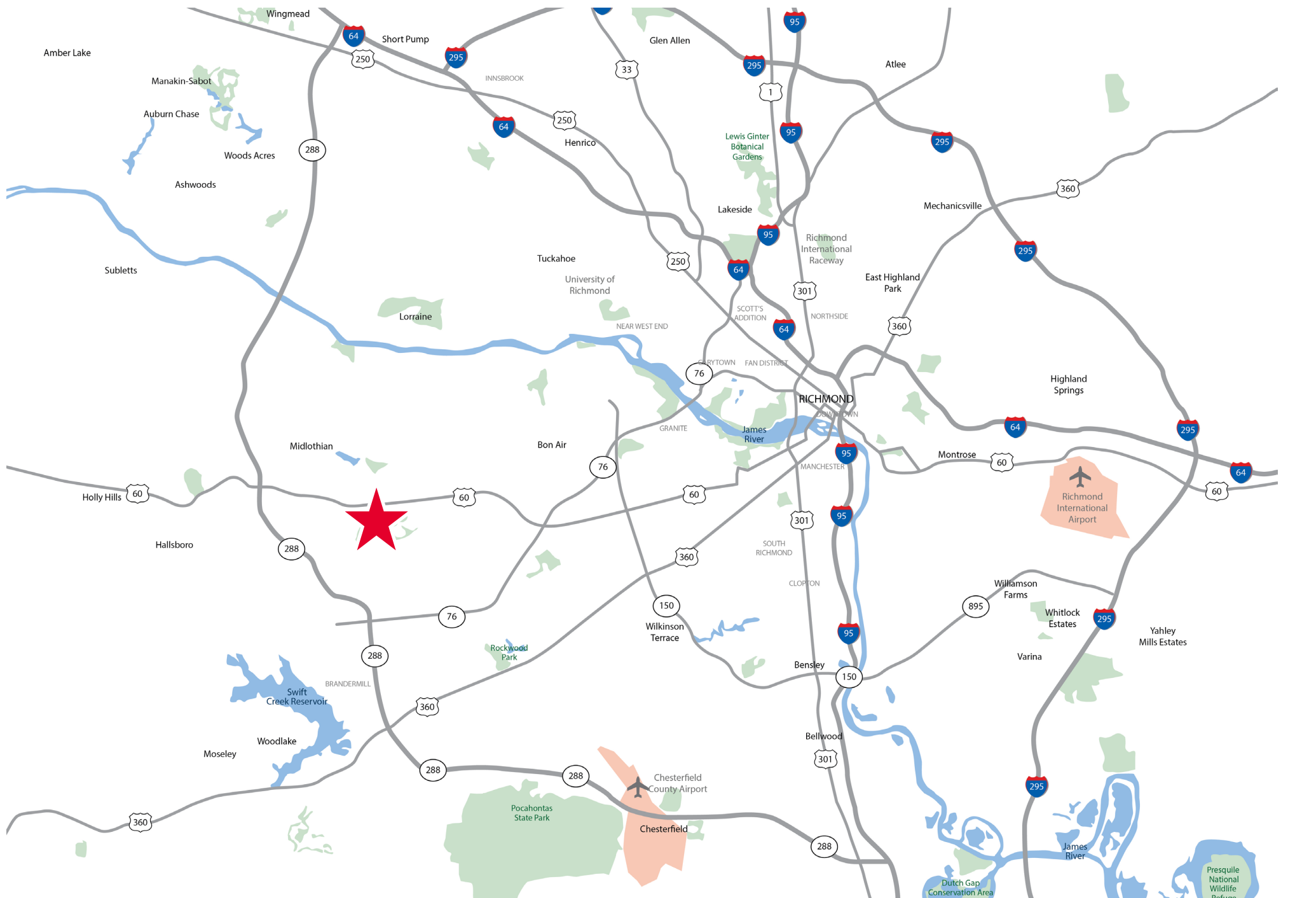
PROPERTY PHOTOS



AERIAL



REGIONAL MAP





CONTACT

DANIELLE BECKSTOFFER
Senior Associate
804 344 7174
danielle.beckstoffer@thalhimer.com

Thalhimer Center
11100 W. Broad Street
Glen Allen, VA 23060
thalhimer.com

Independently Owned and Operated / A Member of the Cushman & Wakefield Alliance

Cushman & Wakefield | Thalhimer © 2025. No warranty or representation, express or implied, is made to the accuracy or completeness of the information contained herein, and same is submitted subject to errors, omissions, change of price, rental or other conditions, withdrawal without notice, and to any special listing conditions imposed by the property owner(s). As applicable, we make no representation as to the condition of the property (or properties) in question.