

FLEX SPACE FOR LEASE

Interair Business Center

2402 Charles City Road
Richmond, VA



2,679 SF
AVAILABLE

SPACE HIGHLIGHTS

- **2,679 SF AVAILABLE**
- Attractive office layout with break area
- Fully conditioned warehouse
- Minutes from Richmond International Airport
- Convenient access to interstate system
- 8x10 Drive In Door
- Asking \$12.75/SF, industrial gross



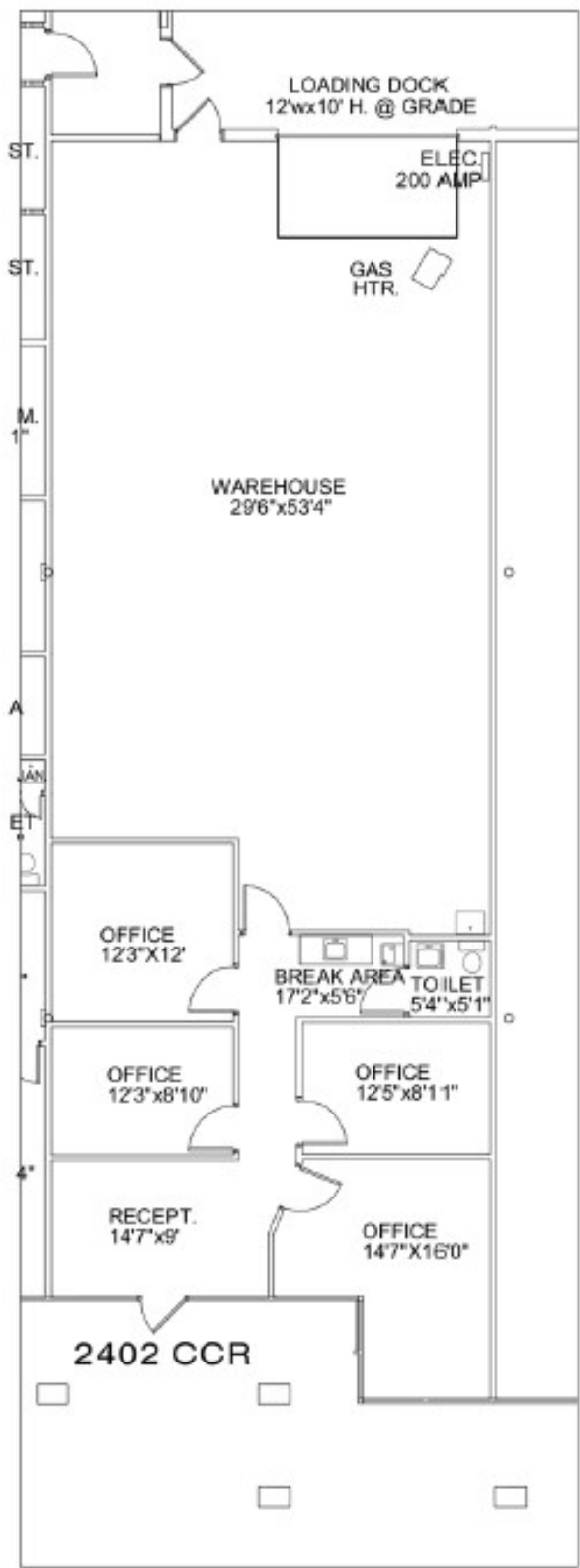
ISAAC DEREGIBUS, SIOR
Senior Vice President
804 697 3426
isaac.deregibus@thalhimer.com

GRAHAM STONEBURNER, SIOR
Senior Vice President
804 344 7159
graham.stoneburner@thalhimer.com

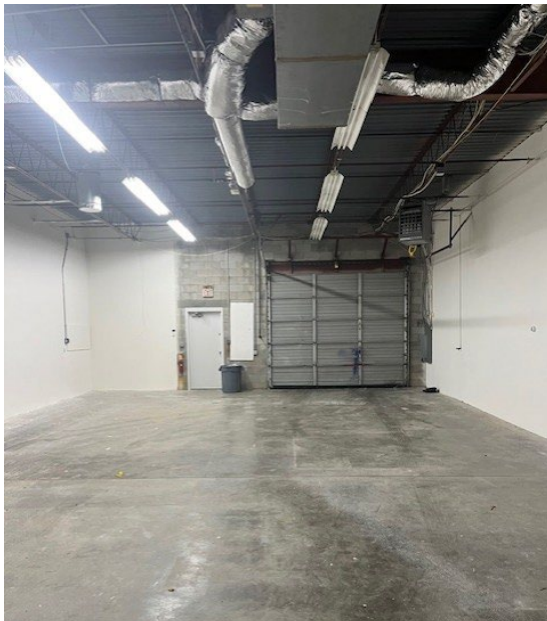
CHRISSY CHAPPELL
Associate
804 344 7197
chrissy.chappell@thalhimer.com

FLEX SPACE

Floor Plan



INTERAIR BUSINESS CENTER



ISAAC DEREGIBUS, SIOR
Senior Vice President
804 697 3426
isaac.deregibus@thalhimer.com

GRAHAM STONEBURNER, SIOR
Senior Vice President
804 344 7159
graham.stoneburner@thalhimer.com

CHRISSY CHAPPELL
Associate
804 344 7197
chrissy.chappell@thalhimer.com

Independently Owned and Operated / A Member of the Cushman & Wakefield Alliance

Cushman Wakefield | Thalhimer © 2025. No warranty or representation, express or implied, is made to the accuracy or completeness of the information contained herein, and same is submitted subject to errors, omissions, change of price, rental or other conditions, withdrawal without notice, and to any special listing conditions, imposed by the property owner(s). As applicable, we make no representation as to the condition of the property (or properties) in question.