



FOR SALE | FORMER BANK BRANCH

**1037 MAIN STREET**

**ALTAVISTA, VIRGINIA 24517**



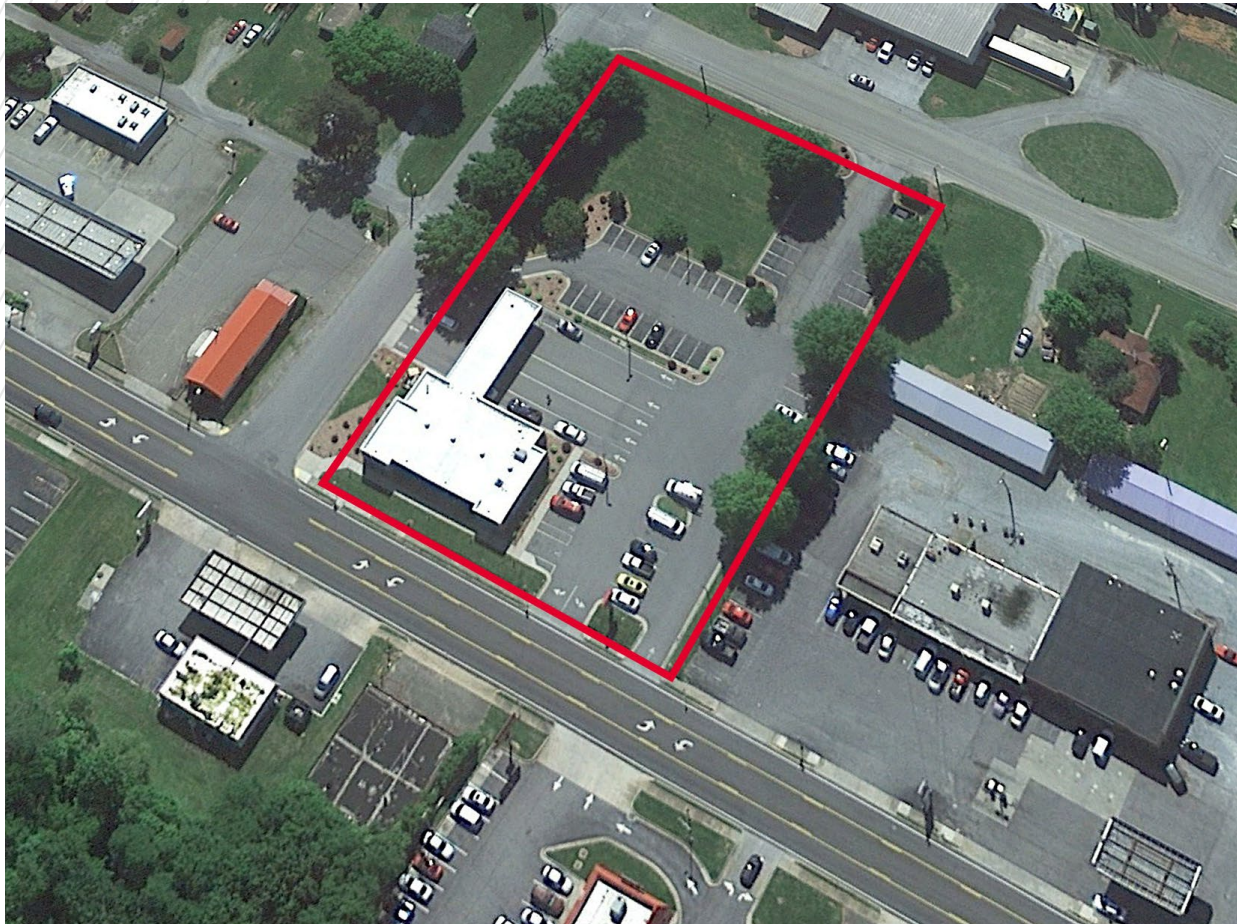
CUSHMAN &  
WAKEFIELD

**THALHIMER**



# 1037 Main Street

## Altavista, Virginia 24517



## Property Overview

- Prominent hard corner site in the center of downtown Altavista
- Frontage on Main Street, Nelson Avenue & 5th Street
- Large pylon & building signage



## Building Highlights

4,347  
TOTAL SF

1.57  
ACRES

1980  
BUILT

FLOORS	One (1)
ZONING	C-2 (Campbell County)
PARKING	52 spaces (12.0 per 1,000 SF)
TRAFFIC COUNTS	12,000 VPD - Main Street



# 1037 Main Street

## Altavista, Virginia 24517

### Lobby



8,968  
**POPULATION**



\$53,326  
**MEDIAN INCOME**



10,182  
**DAYTIME  
POPULATION**

#### DEMOGRAPHICS

	1 MILE	5 MILES	10 MILES
Population	2,022	8,968	20,256
Median Household Income	\$32,522	\$53,326	\$58,636
Daytime Population	3,864	10,182	17,838



**1037 Main Street**  
**Altavista, Virginia 24517**

**Gallery**



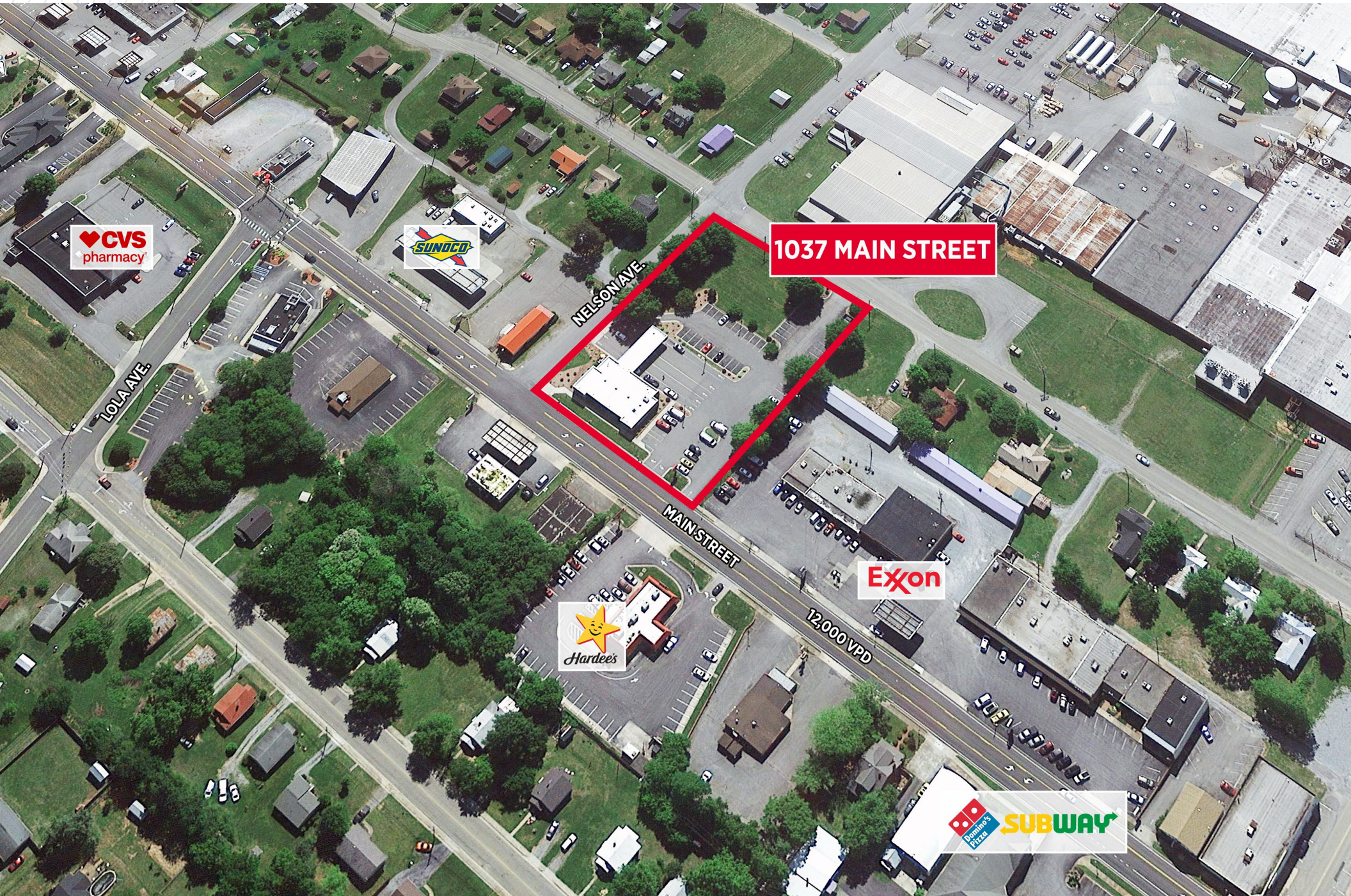
**REAR FAÇADE & DRIVE-THRUS**



# 1037 Main Street

Altavista, Virginia 24517

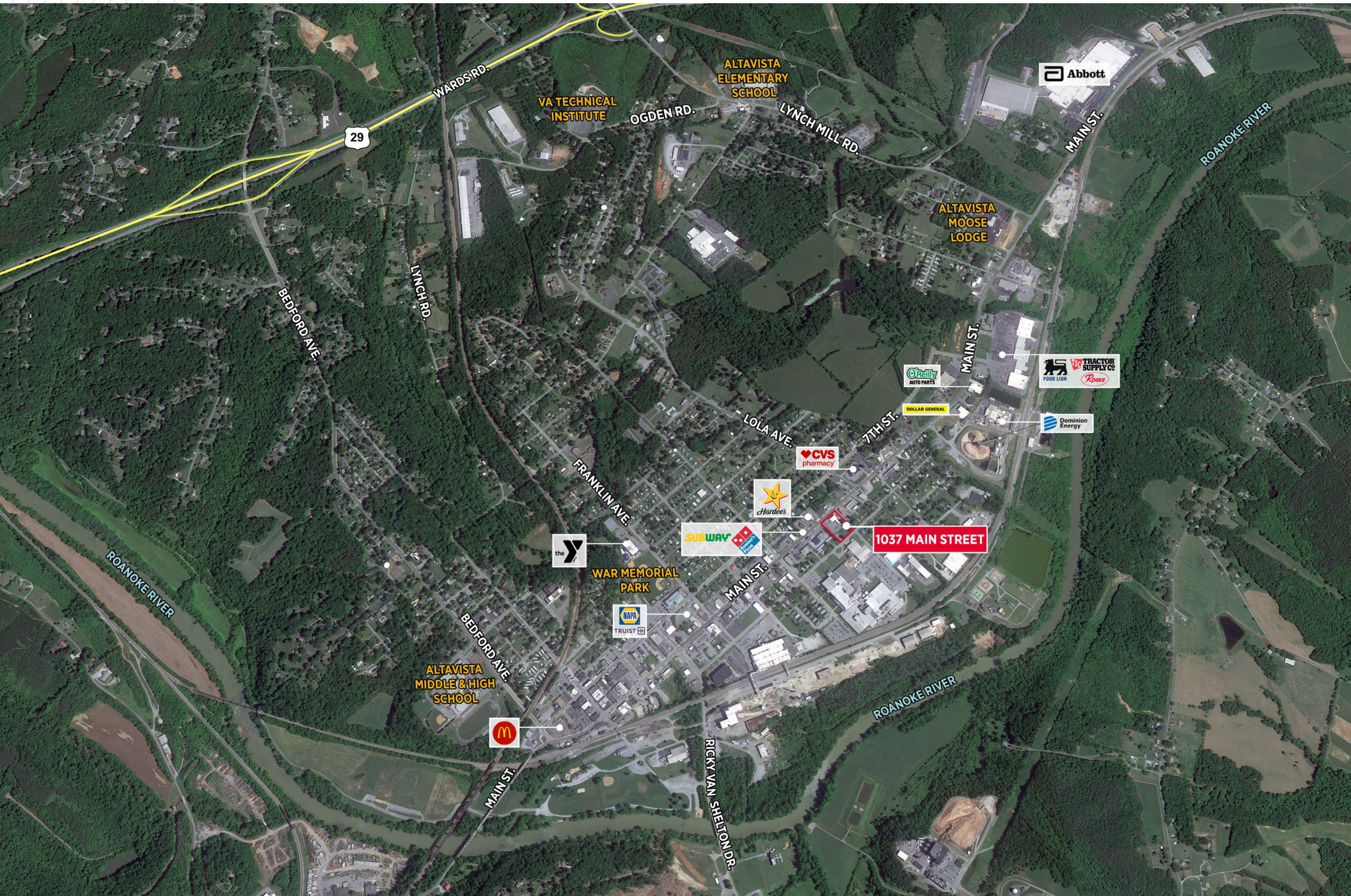
## Location Overview





**1037 Main Street**  
**Altavista, Virginia 24517**

## Location Overview







## FOR MORE INFORMATION, CONTACT:

**NORMAN MOON, CCIM, SIOR**

First Vice President  
434 455 2302

[norman.moon@thalhimer.com](mailto:norman.moon@thalhimer.com)

**WILL MCGOOGAN**

First Vice President  
804 697 3463

[will.mcgoogan@thalhimer.com](mailto:will.mcgoogan@thalhimer.com)

Coffee Crossing  
6000 Boonsboro Road, Suite A  
Lynchburg, VA 24503  
[www.thalhimer.com](http://www.thalhimer.com)

Independently Owned and Operated / A Member of the Cushman & Wakefield Alliance

Cushman & Wakefield | Thalhimer © 2025. No warranty or representation, express or implied, is made to the accuracy or completeness of the information contained herein, and same is submitted subject to errors, omissions, change of price, rental or other conditions, withdrawal without notice, and to any special listing conditions imposed by the property owner(s). As applicable, we make no representation as to the condition of the property (or properties) in question.



**CUSHMAN &  
WAKEFIELD**

**THALHIMER**