



**OFFICE SPACE FOR SUBLEASE
7,525 SF AVAILABLE**

**REFLECTIONS II
200 GOLDEN OAK COURT, SUITE 300
VIRGINIA BEACH, VA 23452**



**CUSHMAN &
WAKEFIELD**

THALHIMER

Independently Owned and Operated / A Member of the Cushman & Wakefield Alliance

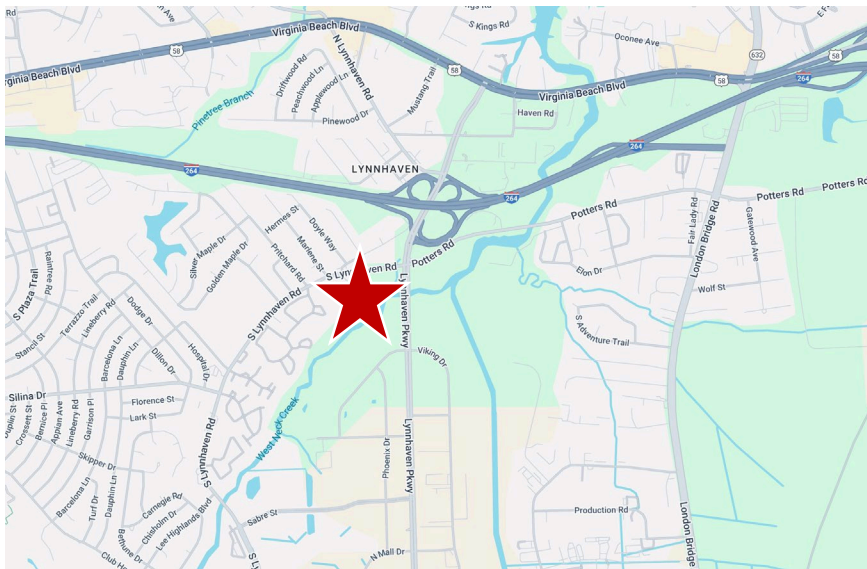
Cushman & Wakefield | Thalhimer © 2025. No warranty or representation, express or implied, is made to the accuracy or completeness of the information contained herein, and same is submitted subject to errors, omissions, change of price, rental or other conditions, withdrawal without notice, and to any special listing conditions imposed by the property owner(s). As applicable, we make no representation as to the condition of the property (or properties) in question.

200 GOLDEN OAK COURT

Suite 300, Virginia Beach, VA 23452

Property Features

- Four-story, Class A, 74,290 SF office building
- Suite 300 - 7,525 SF available for sublease
- Term expires 5/31/2029
- Located in Lynnhaven just minutes from I-264
- Ample parking spaces
- Lease Rate - \$20.00 SF, Full Service



	1 Mile	3 Mile	5 Mile
Estimated Population	8,531	92,612	227,853
Median Household Income	\$61,684	\$71,778	\$78,093
Daytime Population	19,361	51,088	128,879



LOBBY



LOBBY

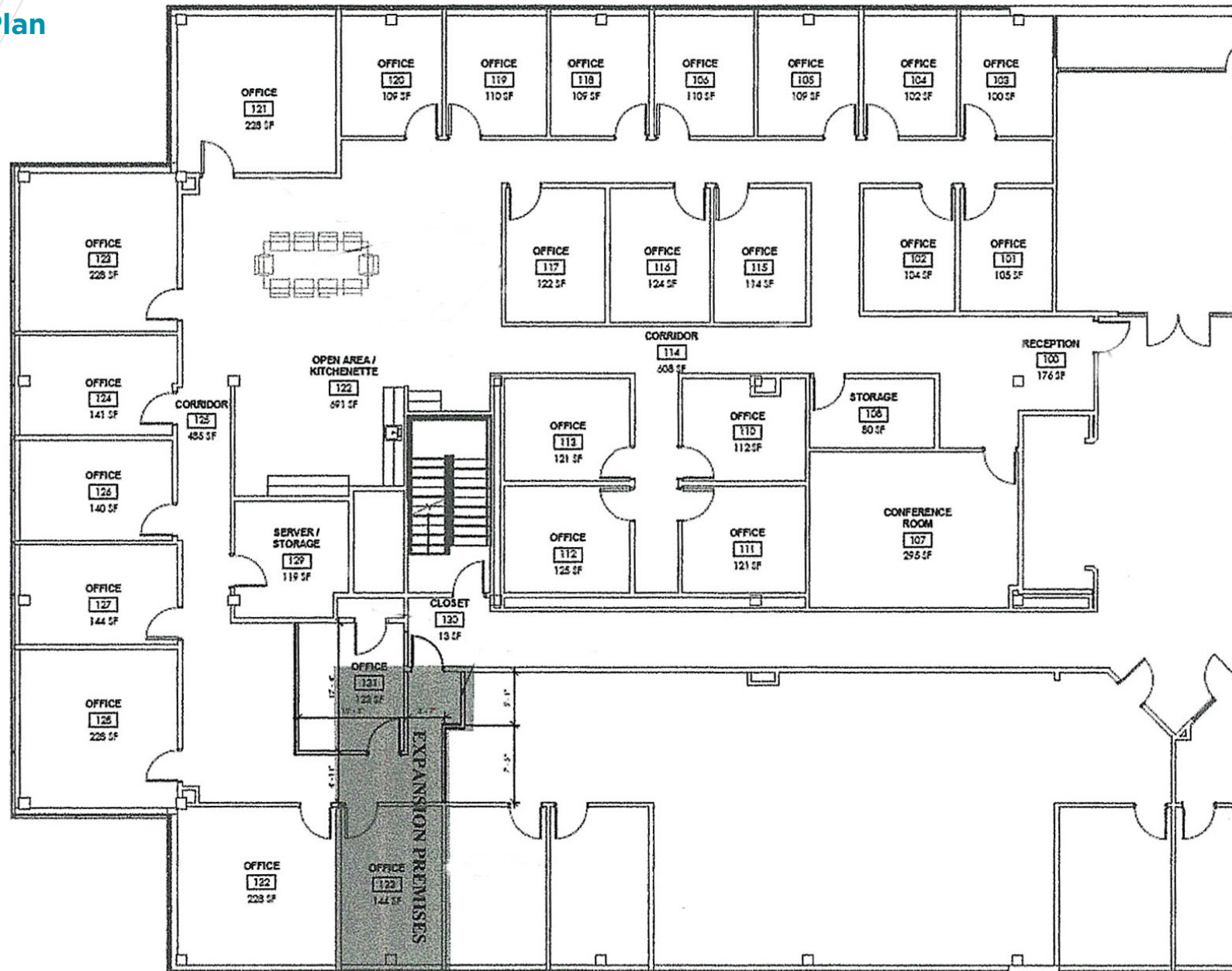
200 GOLDEN OAK COURT

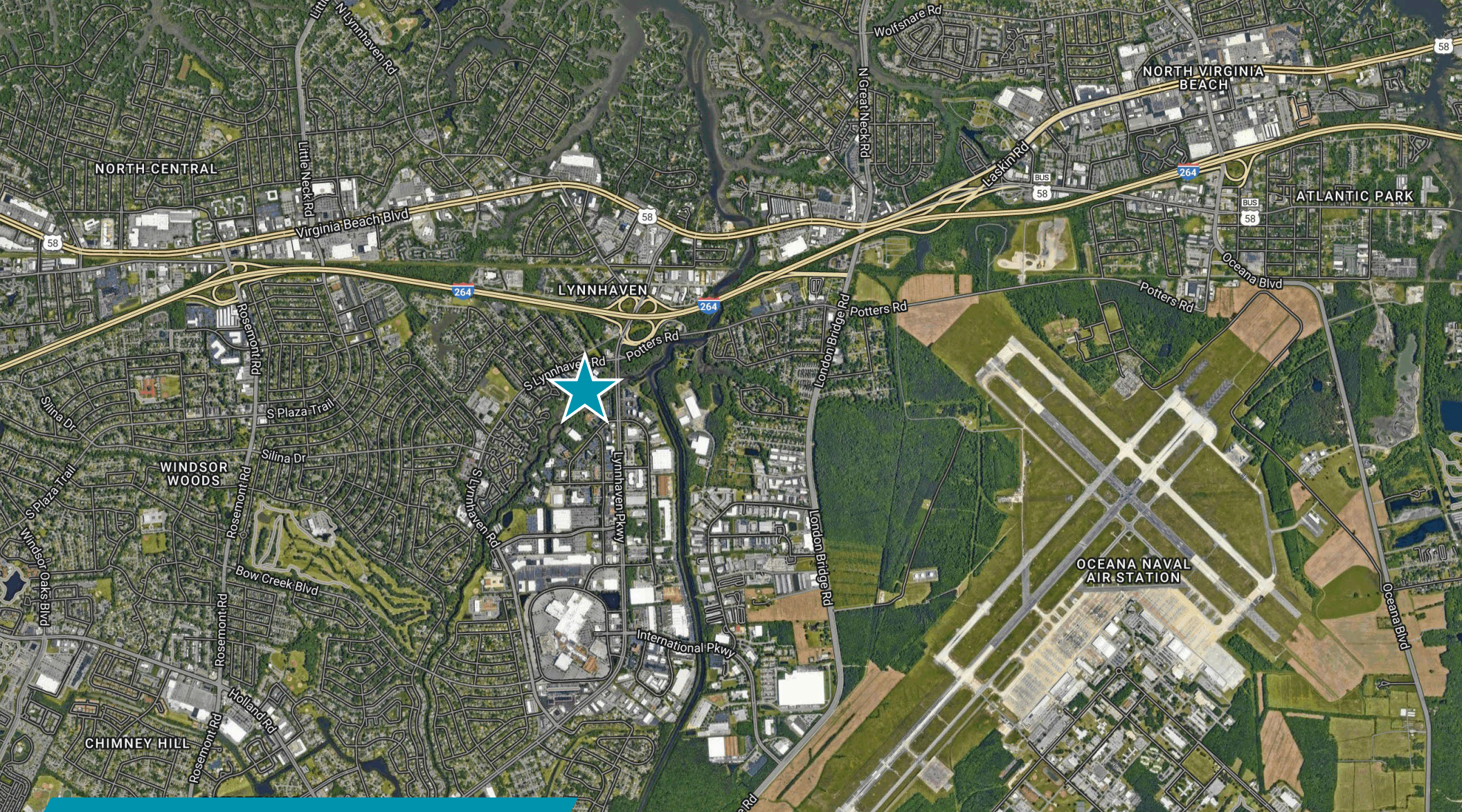
Suite 300, Virginia Beach, VA 23452



THALHIMER

Floor Plan





FOR MORE INFORMATION, CONTACT:

JOHN P. DUFFY, JR., CCIM, SIOR

Vice President

757 213 4141

john.duffy@thalhimer.com

Town Center of Virginia Beach
222 Central Park Avenue, Suite 1500
Virginia Beach, VA 23462
thalhimer.com

Independently Owned and Operated / A Member of the Cushman & Wakefield Alliance

Cushman & Wakefield | Thalhimer © 2025. No warranty or representation, express or implied, is made to the accuracy or completeness of the information contained herein, and same is submitted subject to errors, omissions, change of price, rental or other conditions, withdrawal without notice, and to any special listing conditions imposed by the property owner(s). As applicable, we make no representation as to the condition of the property (or properties) in question.



**CUSHMAN &
WAKEFIELD**

THALHIMER