

INDUSTRIAL FOR LEASE  
**3031 TRANSPORT STREET**  
RICHMOND, VIRGINIA 23234



CUSHMAN &  
WAKEFIELD

THALHIMER

**UP TO 132,000 SF**

WAREHOUSE/DISTRIBUTION FACILITY

AVAILABLE  
IMMEDIATELY



# PROPERTY FEATURES

CUSHMAN &  
WAKEFIELD

THALHIMER



## UP TO 132,000 SF

AVAILABLE - SUBDIVIDABLE  
49,000 & 83,000 SF



## LOCATION

GREAT INTERSTATE ACCESS  
I-95 SOUTH CORRIDOR  
2.8 MILES TO RICHMOND MARINE  
TERMINAL



## 23'

CEILING HEIGHT



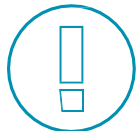
## LOADING

13 COVERED DOCK DOORS  
11 DOCK LEVELERS



## FEATURES

COLUMN SPACING - 35' X 40'  
DRY SPRINKLER SYSTEM  
APPROX. 1,000 SF OFFICE



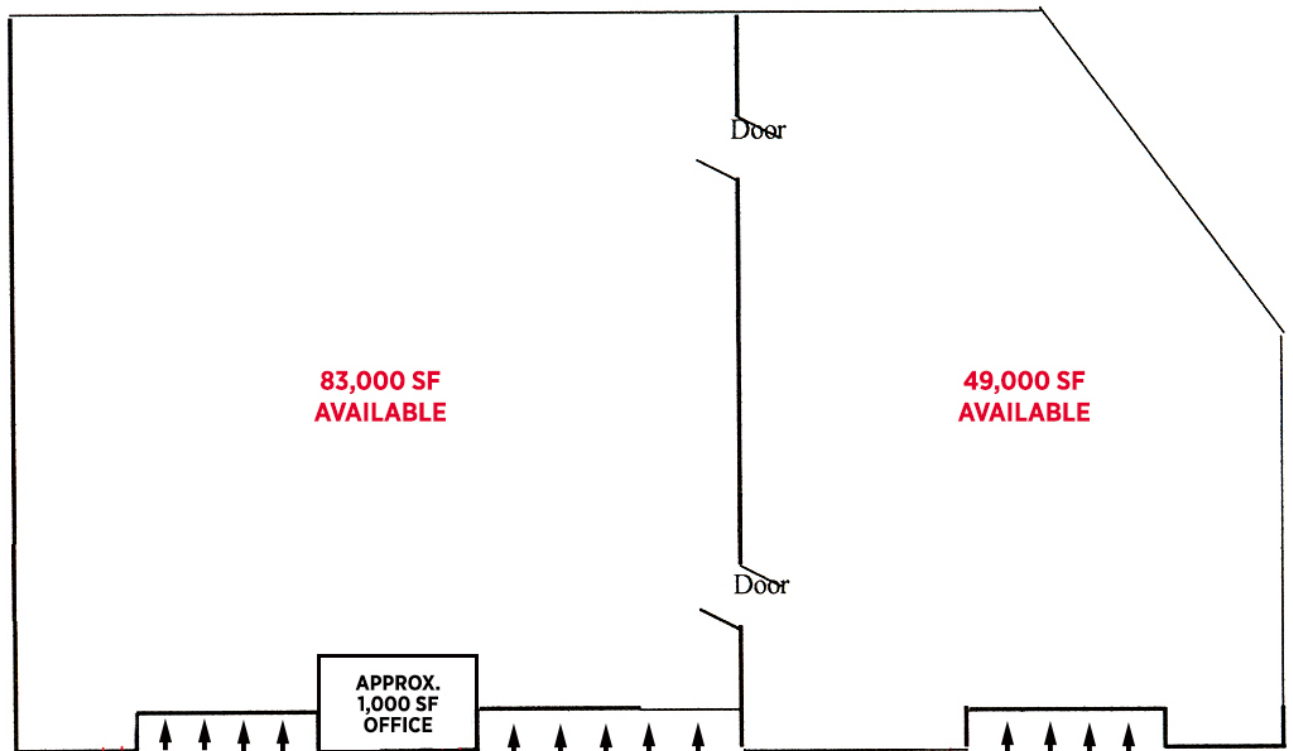
## M-1

ZONING



## IMMEDIATE

TIMING



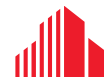


# PROPERTY LOCATION



**GRAHAM STONEBURNER, SIOR**  
Senior Vice President  
804 344 7159  
graham.stoneburner@thalhimer.com

**CRAIG DOUGLAS**  
Senior Associate  
804 344 7153  
craig.douglas@thalhimer.com



**CUSHMAN &  
WAKEFIELD**

**THALHIMER**

Thalhimer Center | 11100 W. Broad Street  
Glen Allen, VA 23060  
[www.thalhimer.com](http://www.thalhimer.com)

Independently Owned and Operated / A Member of the Cushman & Wakefield Alliance

Cushman & Wakefield | Thalhimer © 2025. No warranty or representation, express or implied, is made to the accuracy or completeness of the information contained herein, and same is submitted subject to errors, omissions, change of price, rental or other conditions, withdrawal without notice, and to any special listing conditions imposed by the property owner(s). As applicable, we make no representation as to the condition of the property (or properties) in question.