

FOR SALE

1928 N. Armistead Avenue

Hampton, Virginia 23666



PROPERTY FEATURES

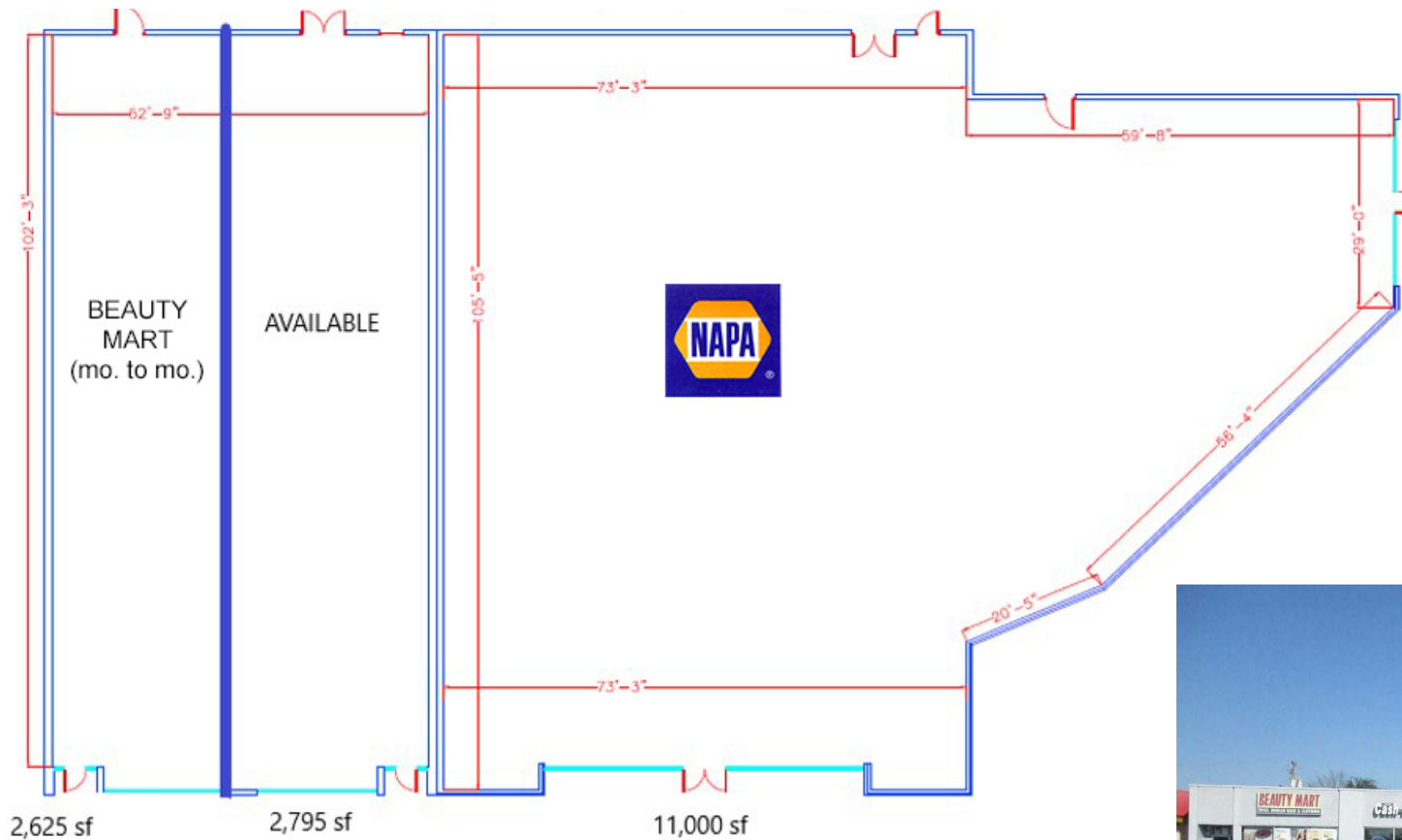


Building Size:	16,420 SF
Site Area:	0.79 acres
Construction:	Brick
Year Built:	1963
Parking Spaces:	24 (parking lot repaved in 2019)
Zoning:	C1
Sale Price:	\$1,500,000
Tenant Rent Roll:	Contact Agent

Freestanding retail strip center with approximately 370' of frontage comprised of up to three Tenants spaces to include NAPA Auto Parts. The corner parcel faces Mercury Boulevard and N. Armistead intersection. Great exposure, exterior signage, and easy access into private parking lot.

The masonry exterior building has 13' ceilings in warehouse areas, grid ceilings in showroom areas, and located in the 100-year and 500-year floodplain area.

FLOOR PLAN

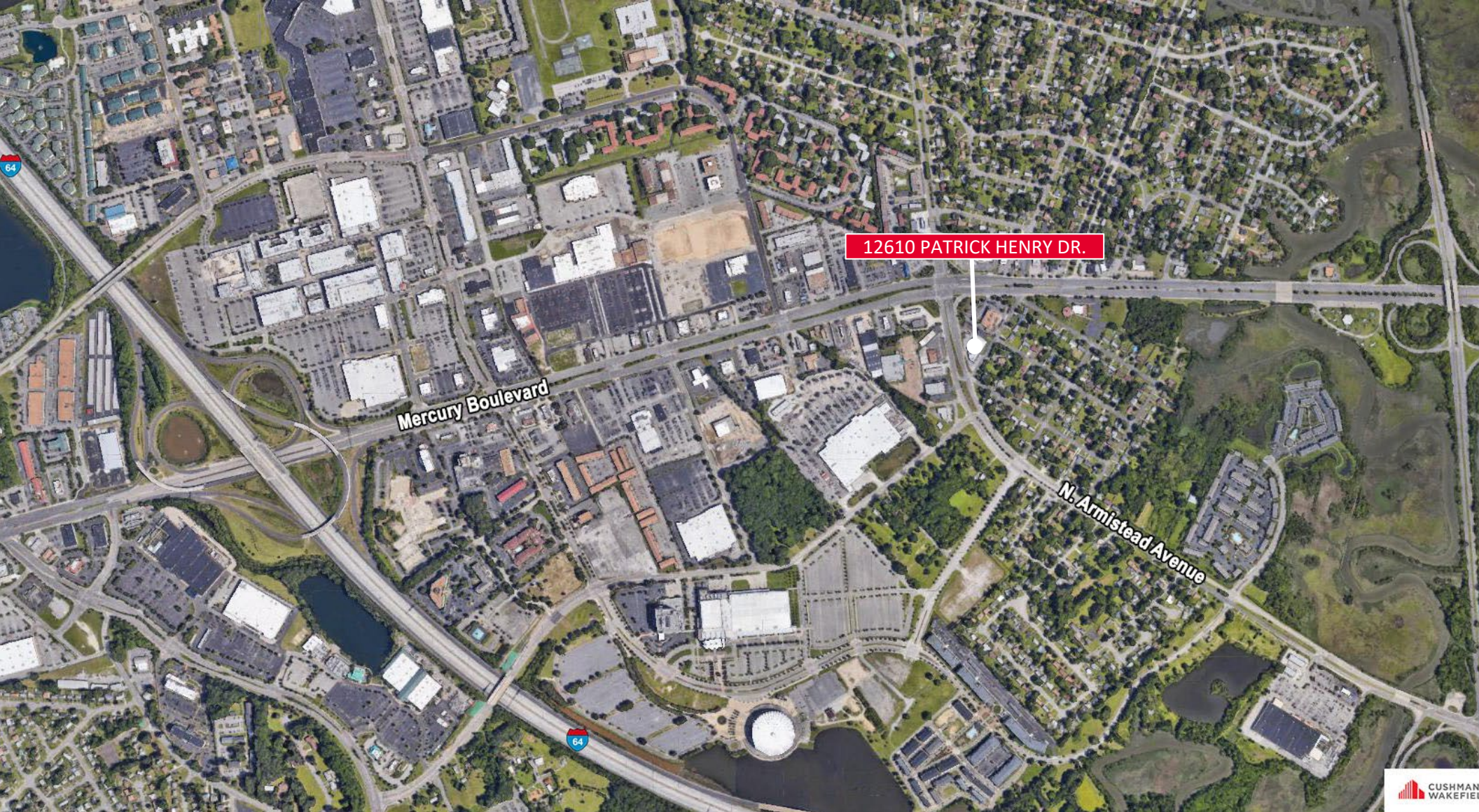


Tax records show 1928 N. Armistead Ave. is comprised of 1926, 1928 & 1930 N. Armistead. To look up city records use RPC: 7001177



AERIAL





CONTACT

TERESA NETTLES

Senior Vice President

+1 757 873 1268

teresa.nettles@thalhimer.com

One BayPort Way

Suite 100

Newport News, VA 23606

thalhimer.com



**CUSHMAN &
WAKEFIELD**

THALHIMER

Independently Owned and Operated / A Member of the Cushman & Wakefield Alliance

Cushman & Wakefield | Thalhimer © 2025. No warranty or representation, express or implied, is made to the accuracy or completeness of the information contained herein, and same is submitted subject to errors, omissions, change of price, rental or other conditions, withdrawal without notice, and to any special listing conditions imposed by the property owner(s). As applicable, we make no representation as to the condition of the property (or properties) in question.