

# FOR LEASE

## White Oak Technology Park

3880 Technology Court  
Sandston, VA 23150



## Property Features

- » 125,000 SF Space
  - » ±2,700 SF existing office space
- » 26' Clear height
- » LED Lighting
- » 50' x 50' Columns
- » 11 Loading docks | 1 Drive-in door
- » Abundant auto parking
- » ±18 trailer parking stalls
- » Located in White Oak Technology Park
- » M-2 Zoning



Owned By  
**maple<sup>tree</sup>**

Leasing By  
**CUSHMAN & WAKEFIELD** | **THALHIMER**

**Evan Magrill**  
Executive Vice President  
804 697 3435  
evan.magrill@thalhimer.com

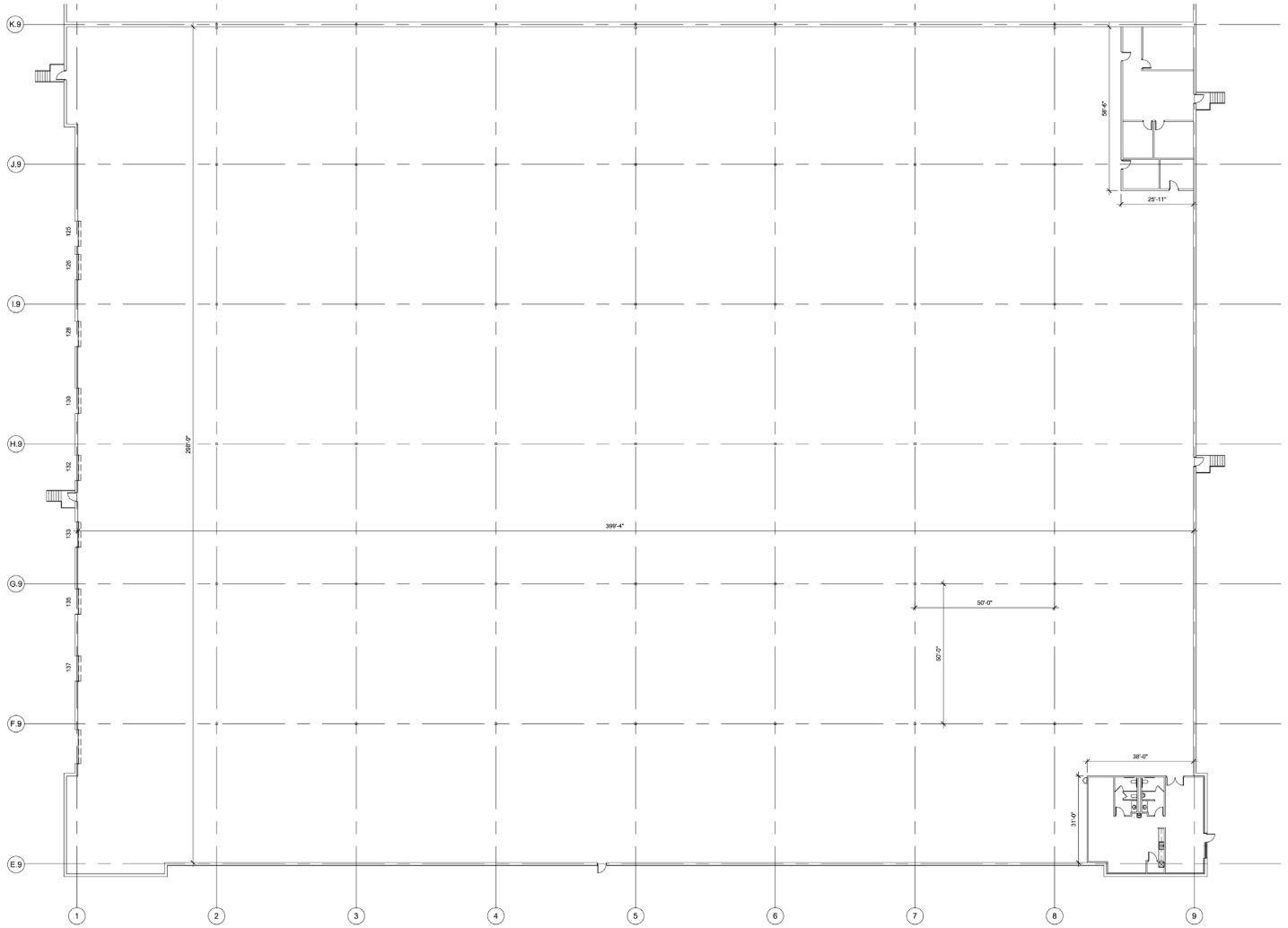
**Graham Stoneburner, SIOR**  
Senior Vice President  
804 344 7159  
graham.stoneburner@thalhimer.com



# FOR LEASE

3880 Technology Court  
Sandston, VA 23150

125,000 SF space



Owned By  
**mapletree**

## About Us

Mapletree is a leading global real estate developer, investor and manager headquartered in Singapore. Mapletree owns and manages 70 million square feet of logistics and industrial properties across 26 states with offices in New York, Chicago, Atlanta, Dallas and Los Angeles.

[www.mapletree.com.sg](http://www.mapletree.com.sg)





## Property Features

- » Immediate access to I-64 and I-295 » Good access to labor supply
- » Clear Height of 26 feet » 11 Loading Docks » 1 Drive-in Door » M-2 Zoning



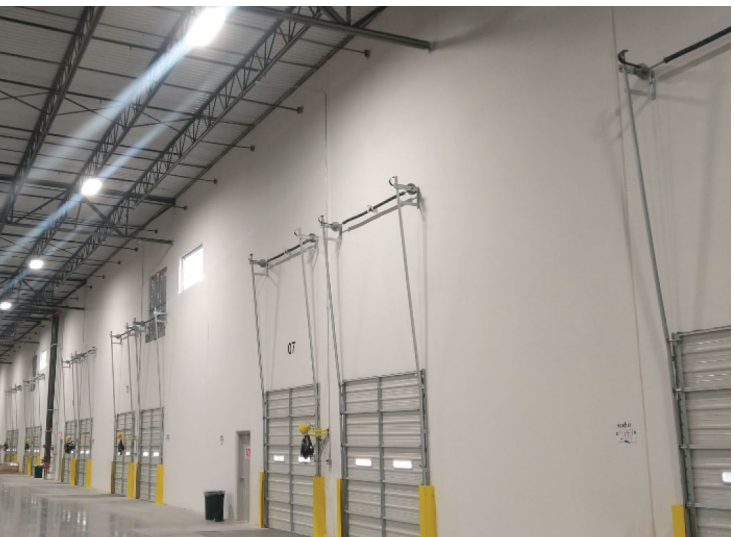
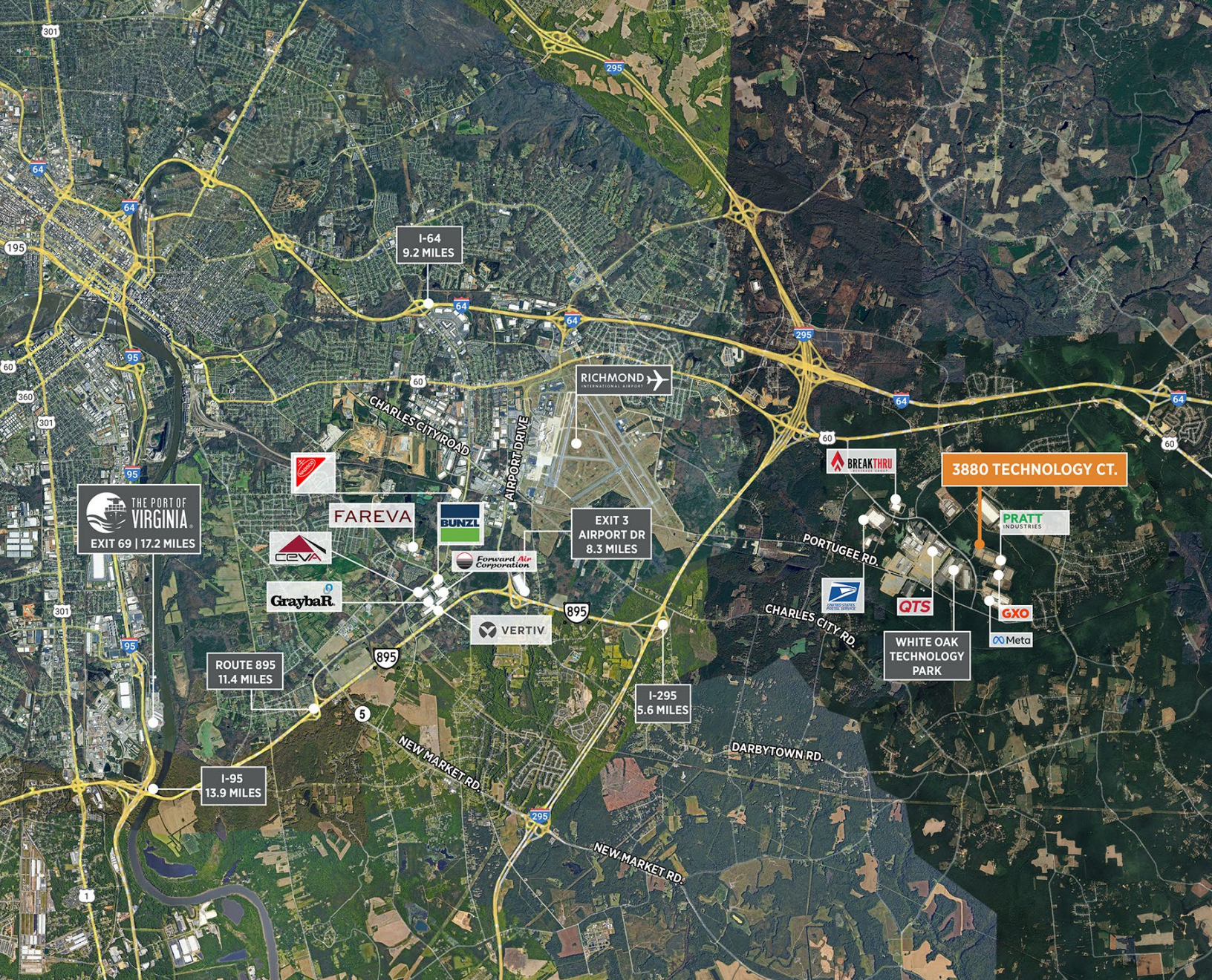
Owned By  
**maple<sup>tree</sup>**

Leasing By  
**CUSHMAN & WAKEFIELD** | **THALHIMER**

**Evan Magrill**  
Executive Vice President  
804 697 3435  
[evan.magrill@thalhimer.com](mailto:evan.magrill@thalhimer.com)

**Graham Stoneburner, SIOR**  
Senior Vice President  
804 344 7159  
[graham.stoneburner@thalhimer.com](mailto:graham.stoneburner@thalhimer.com)





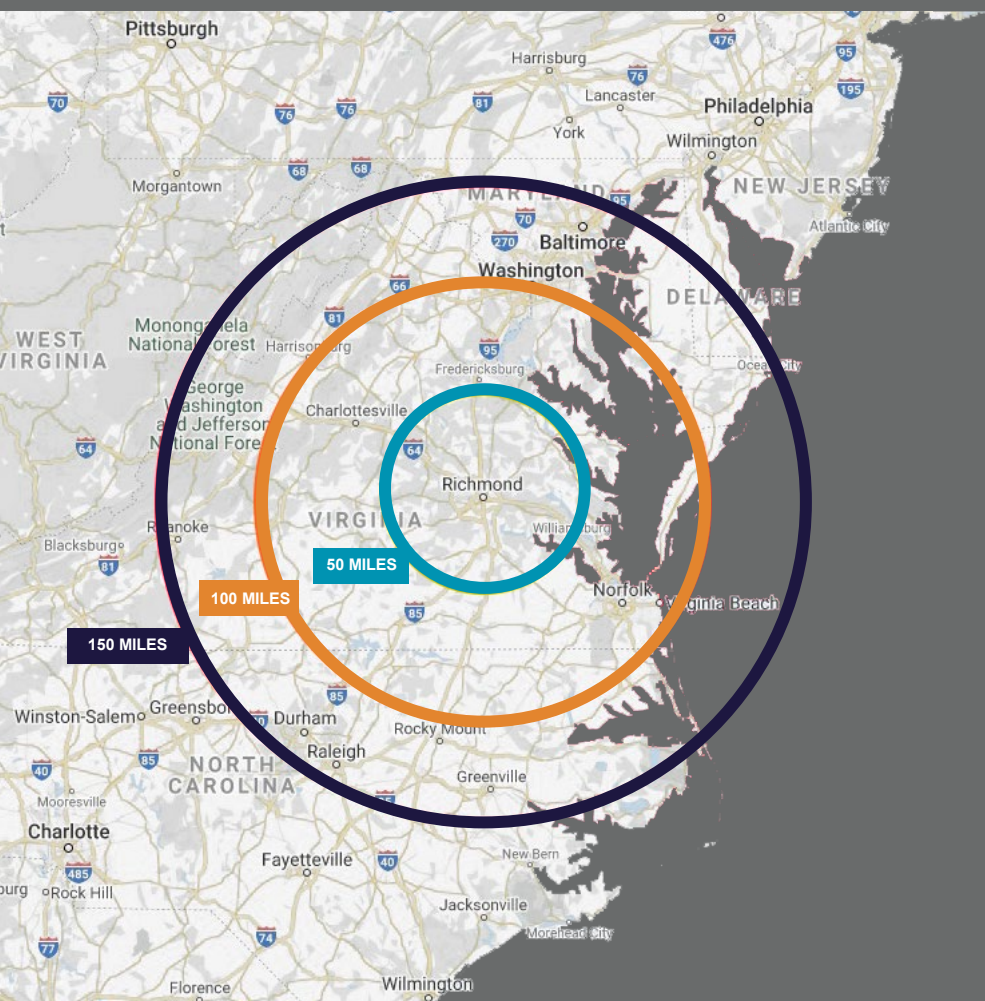
Owned By  
maple<sup>tree</sup>

Leasing By  
CUSHMAN & WAKEFIELD | THALHIMER

Evan Magrill  
Executive Vice President  
804 697 3435  
evan.magrill@thalhimer.com

Graham Stoneburner, SIOR  
Senior Vice President  
804 344 7159  
graham.stoneburner@thalhimer.com





**POPULATION (2024)**  
826,596



**AVERAGE HOUSEHOLD INCOME**  
\$103,515



**TOTAL BUSINESSES**  
28,162+



**LABOR FORCE POPULATION**  
476,053



**UNEMPLOYMENT RATE**  
3.1%



**EDUCATION ATTAINMENT**

HIGH SCHOOL	23.0%
ASSOC. DEGREE	7.8%
BACH. DEGREE	23.3%
GRAD. DEGREE	14.4 %

Owned By  
**maple<sup>tree</sup>**

Leasing By  
**CUSHMAN & WAKEFIELD** | **THALHIMER**

**Evan Magrill**  
Executive Vice President  
804 697 3435  
evan.magrill@thalhimer.com

**Graham Stoneburner, SIOR**  
Senior Vice President  
804 344 7159  
graham.stoneburner@thalhimer.com