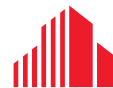


RETAIL FOR LEASE

HARBOUR POINTE STATION

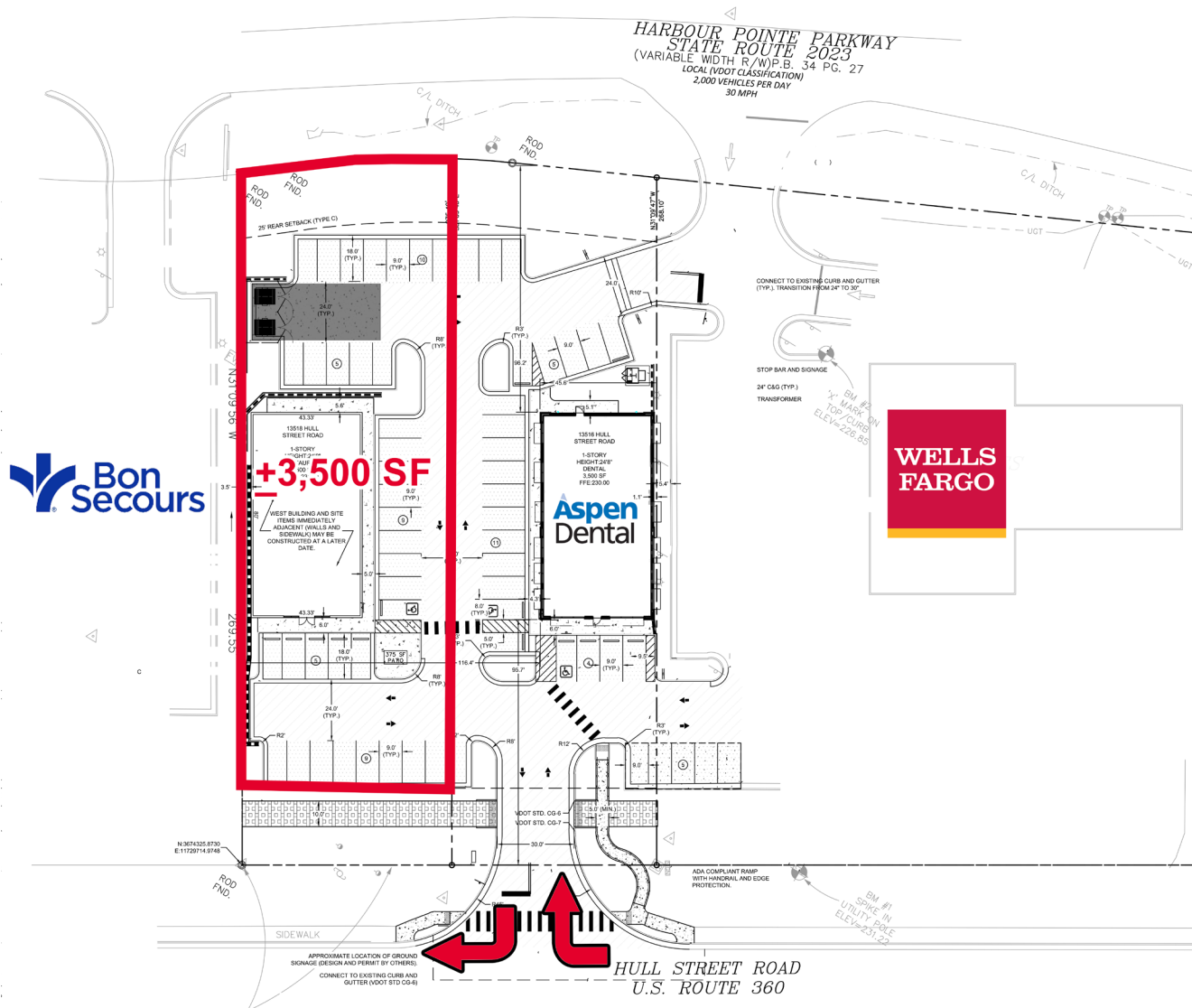
13518 HULL STREET ROAD | MIDLOTHIAN, VA



CUSHMAN &
WAKEFIELD

THALHIMER

Up to +3,500 SF - Potential Subdivision



HARBOUR POINTE STATION

PROPERTY OVERVIEW

- Up to 3,500 SF Available
- Freestanding Pad
- Excellent Visibility & Access
- Join Aspen Dental & Wells Fargo



72,000 VPD
HULL STREET ROAD

Nearby Retailers

HomeGoods®

Kroger
FRESH FOR EVERYONE™

petco

CAVA



MISSION BBQ
The American Way.

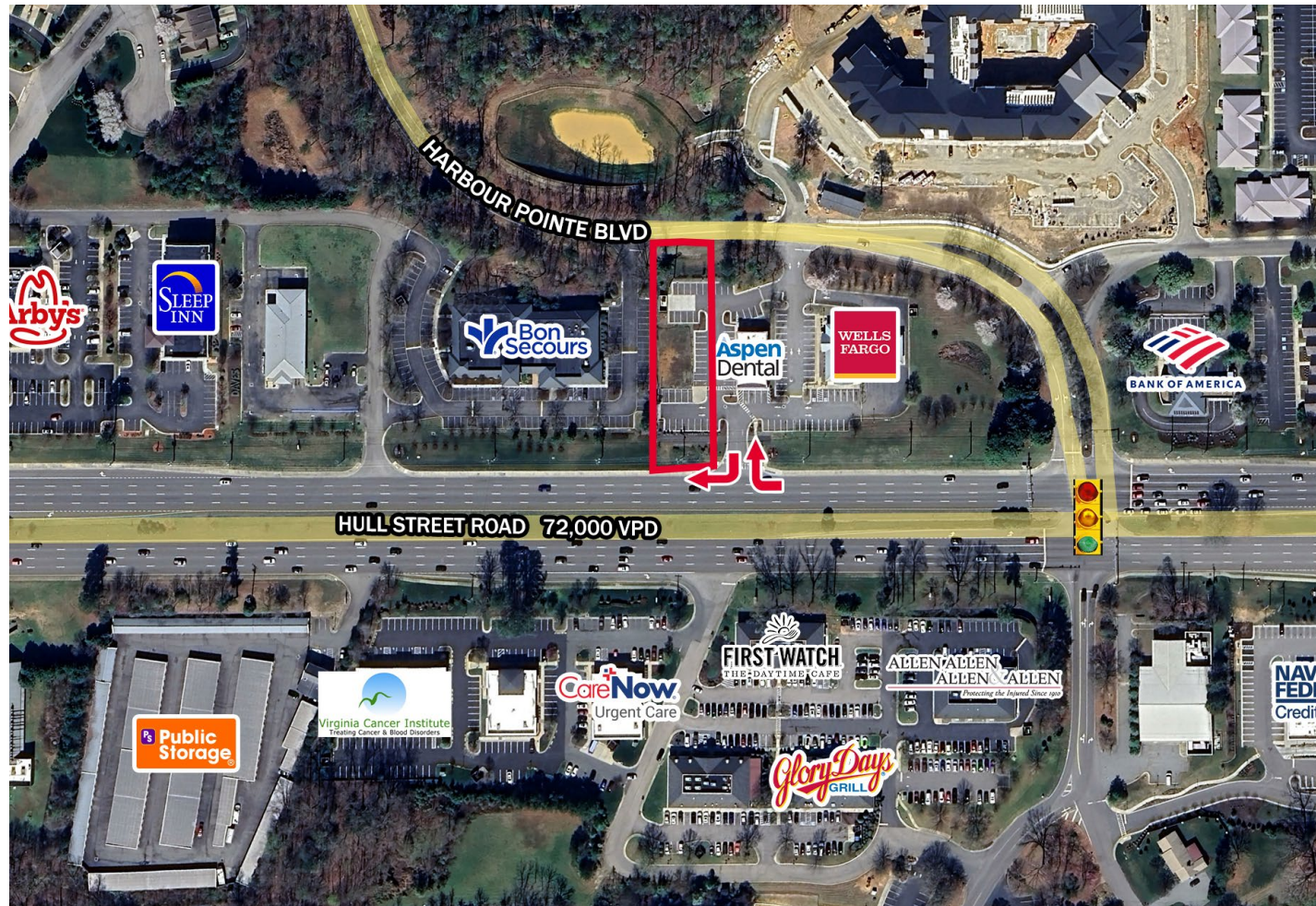
Atlantic
Union Bank

TEXAS
ROADHOUSE

ROSS
DRESS FOR LESS®



NAVY
FEDERAL
Credit Union



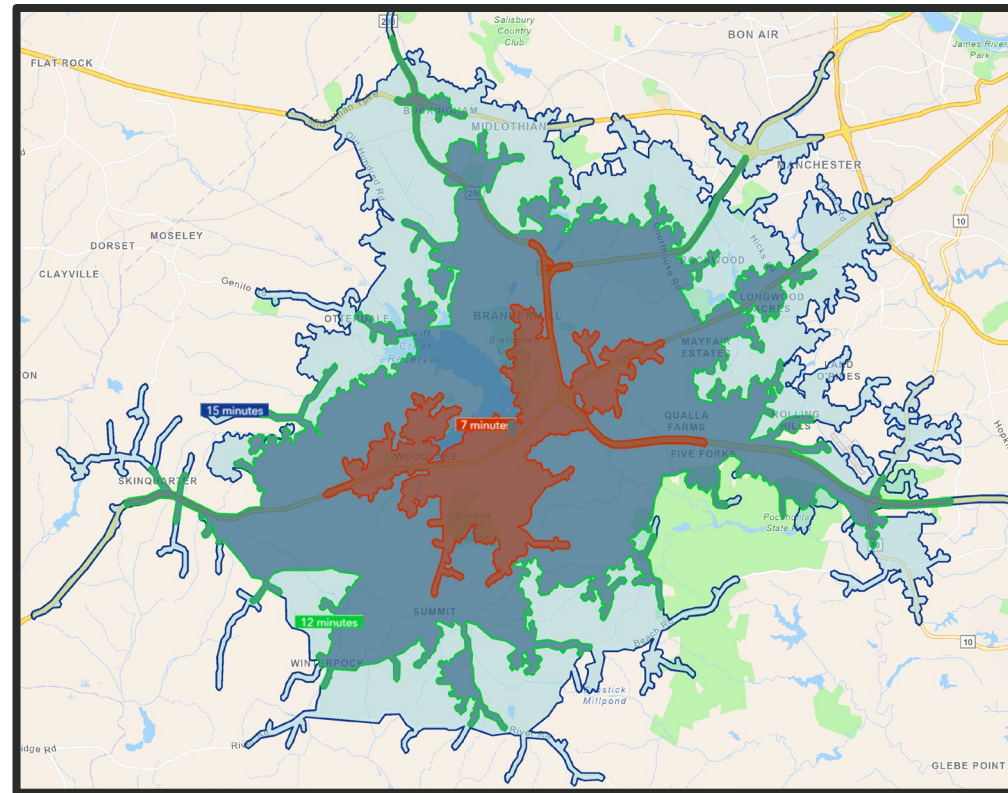
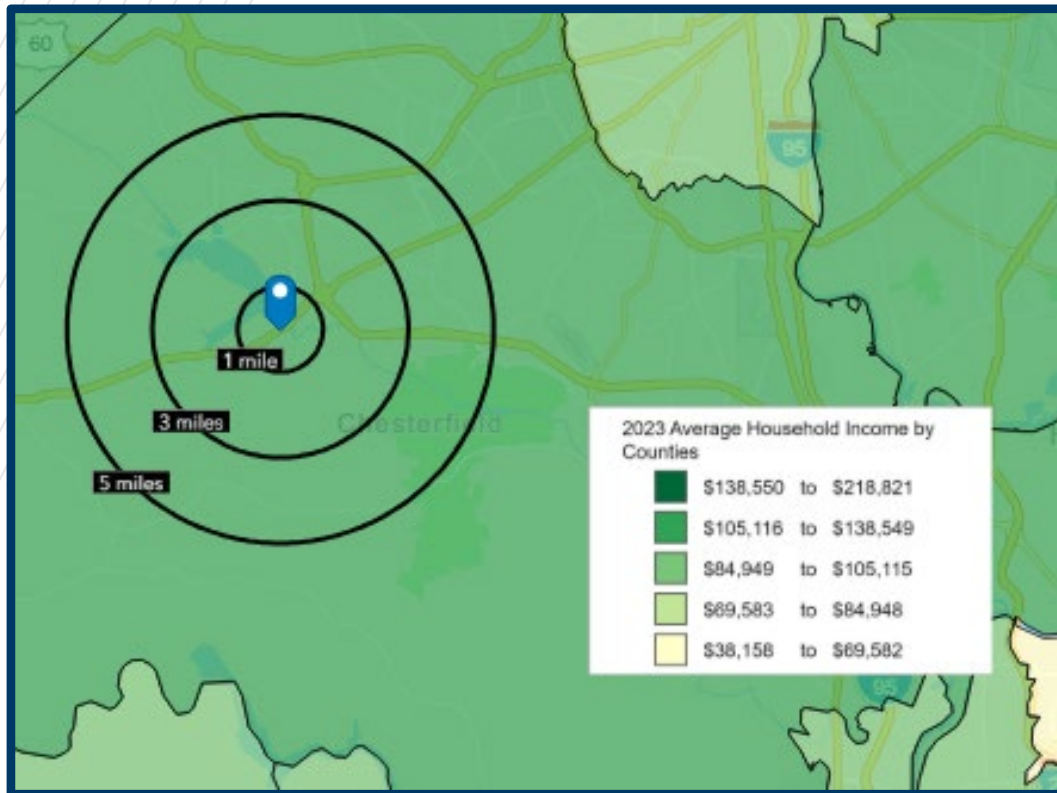
HARBOUR POINTE STATION

AERIAL



HARBOUR POINTE STATION

SITE DEMOGRAPHICS



Demographics

	1 Mile	3 Miles	5 Miles
Population	6,154	50,331	107,530
No. of Households	2,700	18,855	38,893
Median HH Income	\$107,675	\$106,842	\$108,704
Avg. HH Income	\$137,437	\$135,115	\$139,316
Daytime Population	6,857	39,187	78,605
Education (Bachelors+)	49.1%	52.5%	53.7%

Demographics

	7 Min	12 Min	15 Min
Population	24,783	100,327	159,751
No. of Households	9,640	36,968	58,755
Median HH Income	\$106,452	\$105,262	\$102,576
Avg. HH Income	\$133,881	\$134,052	\$132,311
Daytime Population	21,536	75,176	133,117
Education (Bachelors+)	53.1%	51.9%	50.6%



FOR MORE INFORMATION, CONTACT:

CONNIE JORDAN NIELSEN
Senior Vice President
804 697 3569
connie.nielsen@thalhimer.com

ALICIA BROWN
Senior Vice President
804 697 3483
alicia.brown@thalhimer.com

Thalhimer Center
11100 W. Broad Street
Glen Allen, VA 23060
thalhimer.com

Independently Owned and Operated / A Member of the Cushman & Wakefield Alliance

Cushman & Wakefield | Thalhimer © 2025. No warranty or representation, express or implied, is made to the accuracy or completeness of the information contained herein, and same is submitted subject to errors, omissions, change of price, rental or other conditions, withdrawal without notice, and to any special listing conditions imposed by the property owner(s). As applicable, we make no representation as to the condition of the property (or properties) in question.



**CUSHMAN &
WAKEFIELD**

THALHIMER