

FOR LEASE 33,370 SF

INDUSTRIAL OPPORTUNITY

1400 CAVALIER

BOULEVARD, SUITE G & H
Chesapeake, Virginia 23323



GEOFF POSTON, SIOR
Senior Vice President
757 650 8437
geoff.poston@thalhimer.com

CHRISTINE KAEMPFE, SIOR
Senior Vice President
757 499 1384
christine.kaempfe@thalhimer.com

BRETT SAIN
First Vice President
757 213 4153
brett.sain@thalhimer.com



The Town Center of Virginia Beach
222 Central Park Avenue, Suite 1500
Virginia Beach, Virginia 23462
757 499 2900 | www.thalhimer.com

Independently Owned and Operated / A Member of the Cushman & Wakefield Alliance

Cushman Wakefield | Thalhimer © 2025. No warranty or representation, expressed or implied, is made to the accuracy or completeness of the information contained herein, and same is submitted subject to errors, omissions, change of price, rental or other conditions, withdrawal without notice, and to any special listing conditions, imposed by the property owner(s). As applicable, we make no representation as to the condition of the property (or properties) in question.



PROPERTY DETAILS

Available:	33,370 SF OFFICE: 3,083 SF (can be subdivided)
Sprinkler System:	ESFR
Zoning:	M-1 (Light Industrial)
Ceiling Height:	30'
Column Spacing:	40' x 80'
Lighting:	Motion Sensor T-5 Lighting
Loading:	Five (5) Dock Doors 2 Ramp to Grade

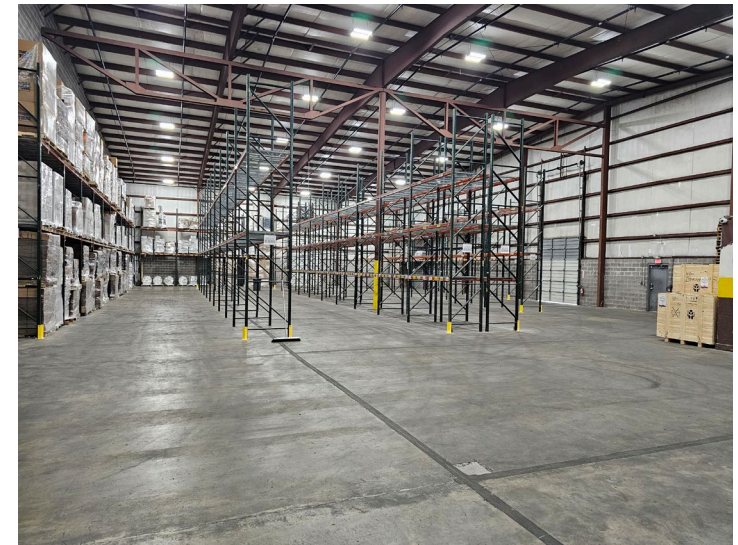
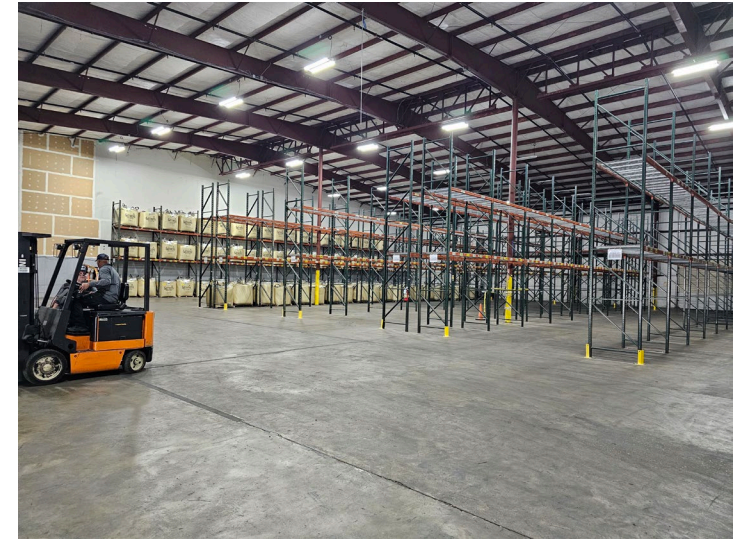
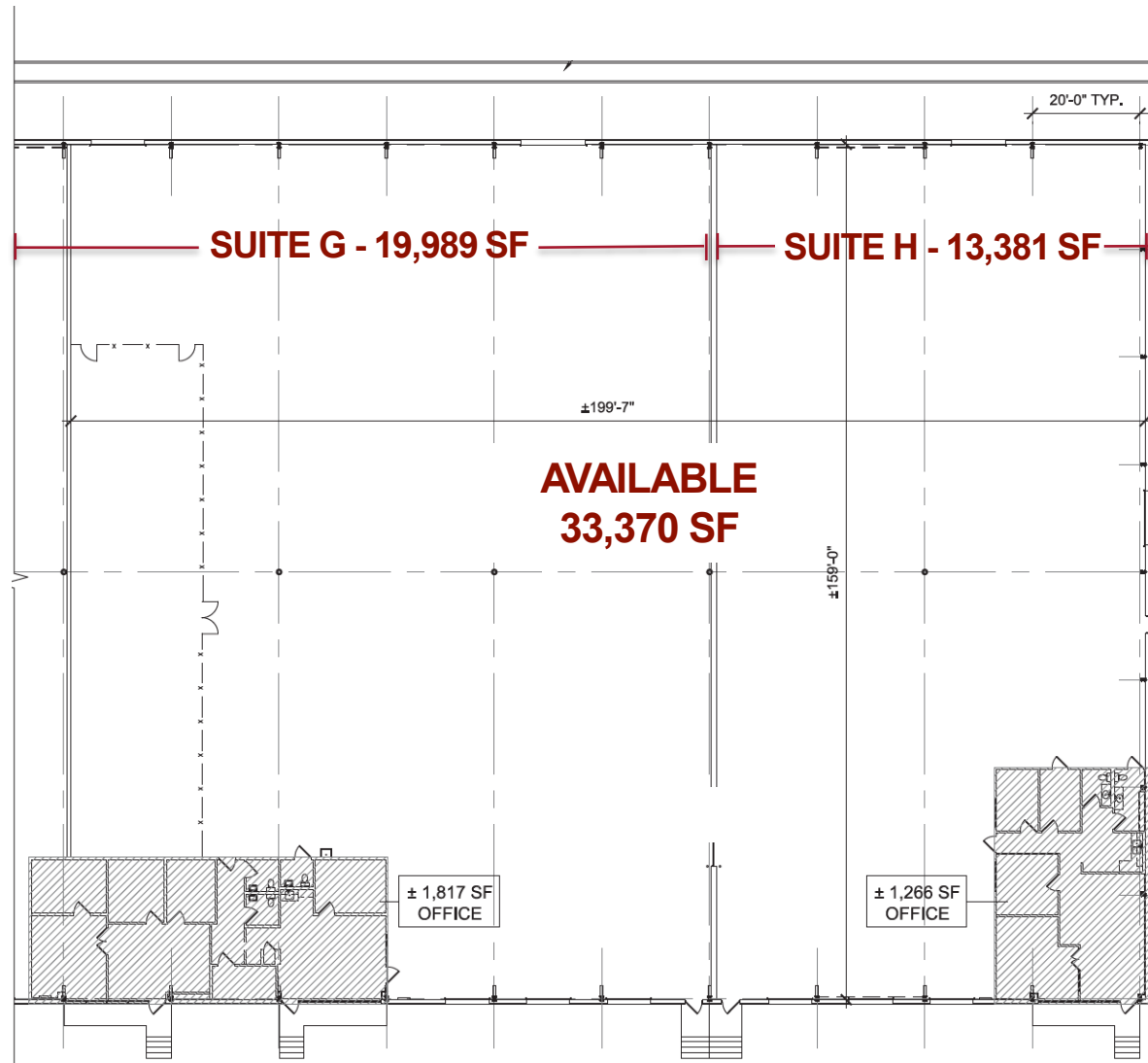
- Immediate access to I-64, I-264, I-664, Military Highway, Route 58 and Route 460
- Owned and operated by B&D Holdings – A privately held investment and development firm with a portfolio of 200+ properties across the country and nearly 1 million square feet of industrial assets in the Hampton Roads Market. *For more information, visit www.bndholdings.com*

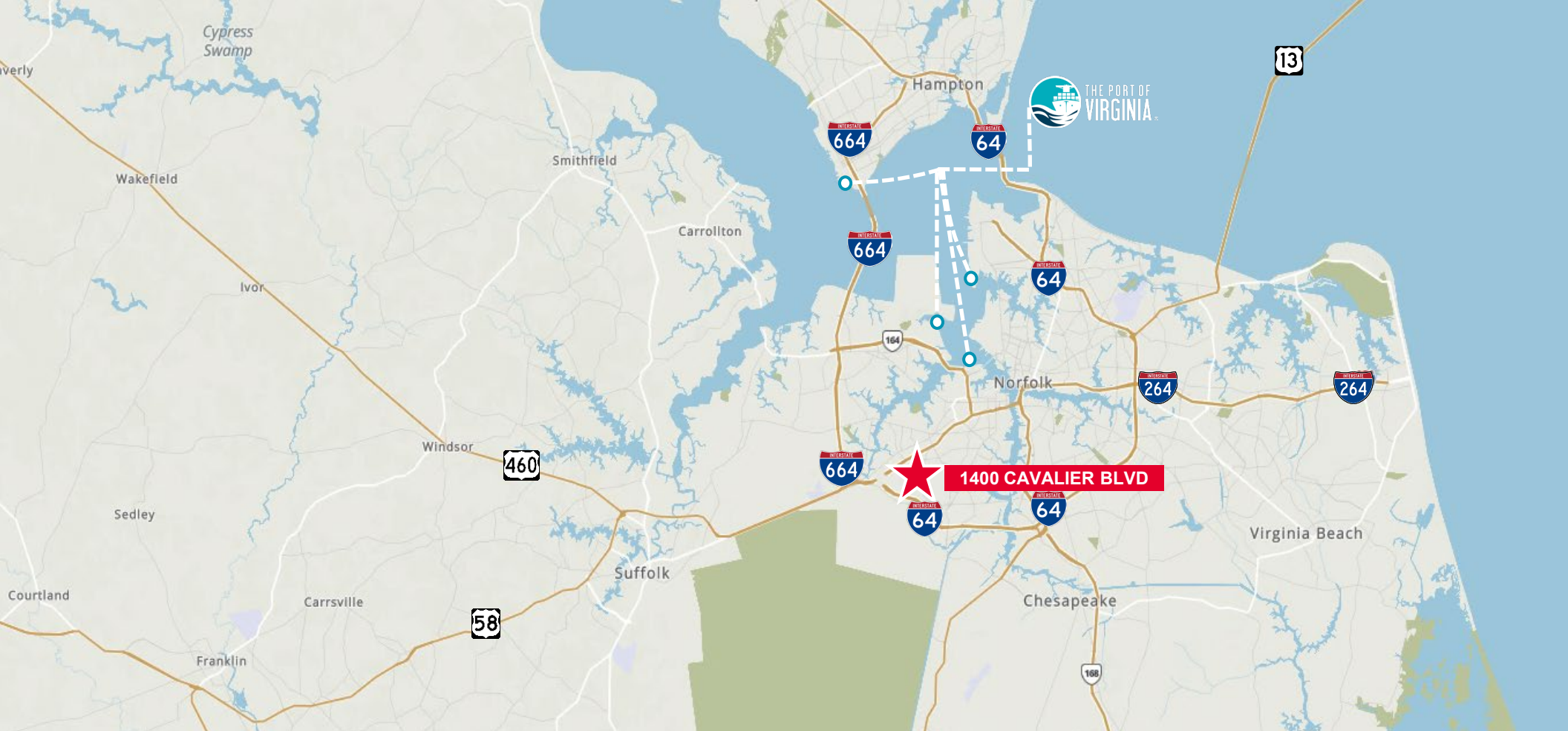


- **OPEX:** \$2.06 PSF
- **Lease Rate:** Pricing varies based on suite size

FLOOR PLAN

(CAN BE SUBDIVIDED)





LOCATION ATTRIBUTES



5.1 Miles
8 Minutes



16 Miles
16 Minutes



(To Hampton)
5 Miles
7 Minutes



(To Chesapeake)
2.3 Miles
4 Minutes



PMT
7.1 Miles
16 Minutes



VIG
8.6 Miles
32 Minutes



NIT
11.6 Miles
22 Minutes



**3rd Largest Port on
the East Coast**

3.3mm TEUs
handled (2023)



**2/3rds of the
US Population**

One Day's Drive



**Foreign Trade
Zone #20**

Eligible For Additional
Tax Incentives



**Third Highest
Concentration Per Capita**

Employed in Coffee/Tea
Processing in the US



**4,000+
Military Retirees**

Join Civilian Labor
Force Each Year