

OFFICE FOR LEASE
425 Locust Ave
Charlottesville, VA 22902



JOHN PRITZLAFF
Senior Vice President
434 234 8416
john.pritzlaff@thalhimer.com

JENNY STONER
Senior Vice President
434 234 8417
jenny.stoner@thalhimer.com

JOSI WILLIAMS
Associate
434 333 6991
josi.williams@thalhimer.com



THALHIMER

**INDIVIDUAL OFFICES
AND SUITES
AVAILABLE!**

PROPERTY HIGHLIGHTS

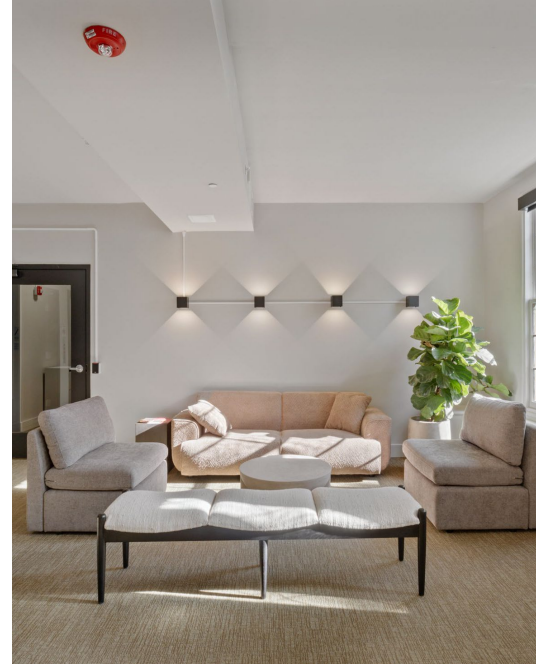


PROPERTY HIGHLIGHTS:

- Individual offices and suites available
- Newly renovated historic building with individual offices or full floors available
- Free parking in onsite parking lot
- Move in ready offices or custom suites available
- All utilities and parking included
- Mountain views from Downtown Charlottesville
- Large shared conferencing spaces
- Onsite fitness center and café



INTERIOR PHOTOS

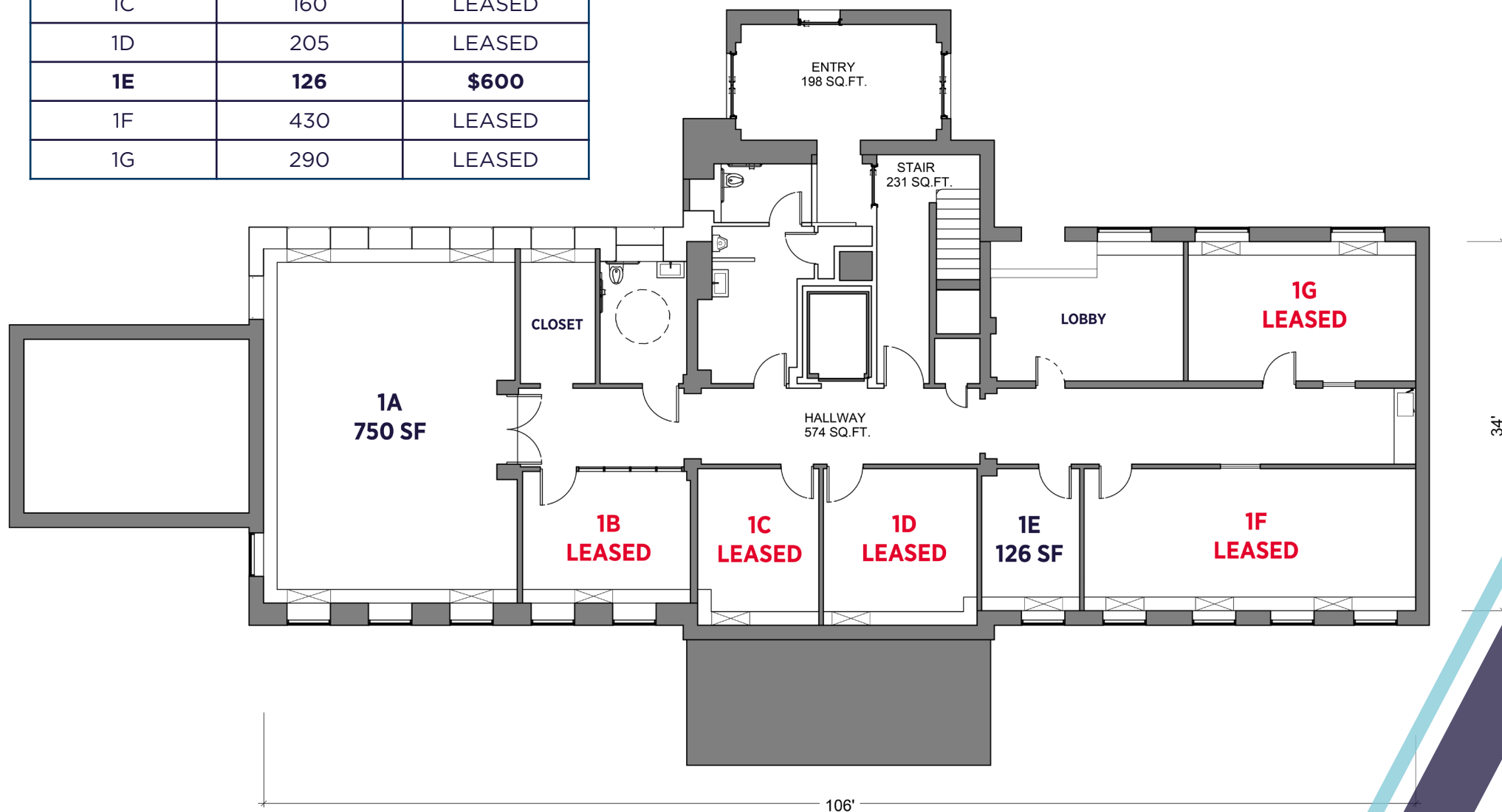


FIRST FLOOR PLAN



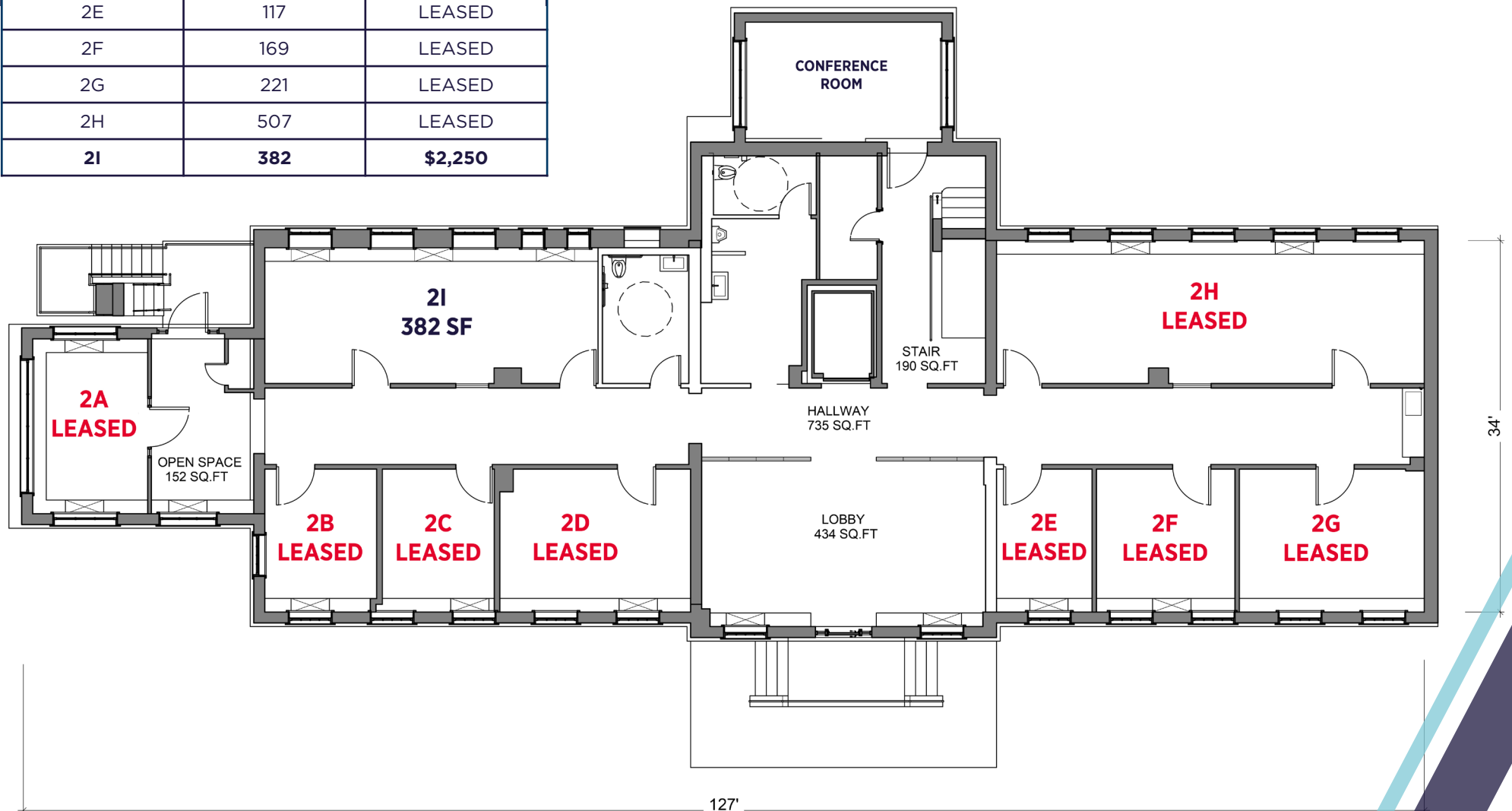
THALHIMER

SUITE	SF	PRICE PER MONTH
1A	750	\$1,500
1B	205	LEASED
1C	160	LEASED
1D	205	LEASED
1E	126	\$600
1F	430	LEASED
1G	290	LEASED



SECOND FLOOR PLAN

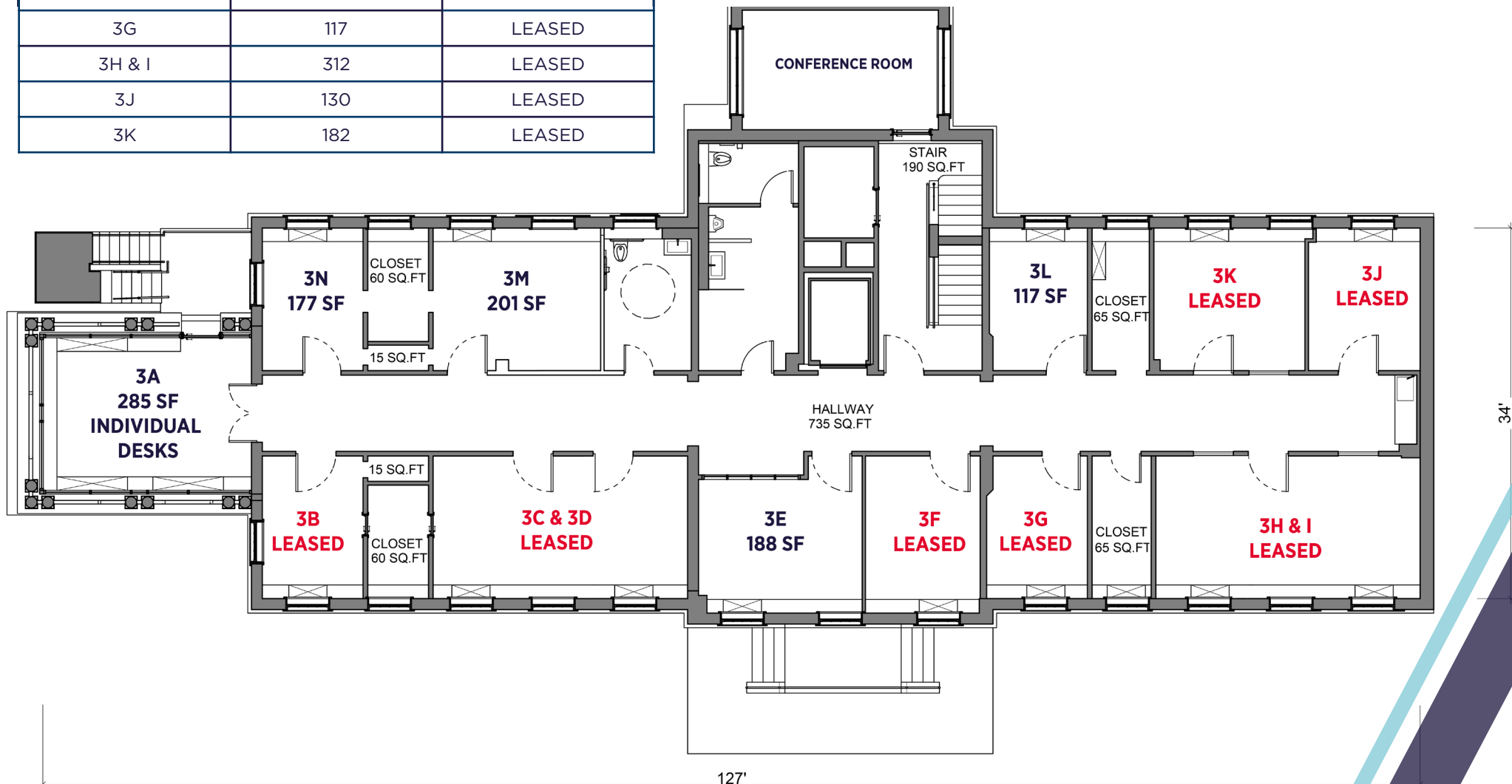
SUITE	SF	PRICE PER MONTH
2A	176	LEASED
2B	130	LEASED
2C	130	LEASED
2D	190	LEASED
2E	117	LEASED
2F	169	LEASED
2G	221	LEASED
2H	507	LEASED
2I	382	\$2,250



THIRD FLOOR PLAN

SUITE	SF	PRICE PER MONTH
3A	INDIVIDUAL DESKS	\$100
3B	192	LEASED
3C & D	299	LEASED
3E	188	\$1,350
3F	152	LEASED
3G	117	LEASED
3H & I	312	LEASED
3J	130	LEASED
3K	182	LEASED

SUITE	SF	PRICE PER MONTH
3L	117	\$900
3M	201	\$1,350
3N	177	\$900



CHARLOTTESVILLE ACCOLADES

BEST CITY FOR ENTREPRENEURS

ENTREPRENEUR MAGAZINE & LIVABILITY.COM

TOP
5

TOP



CITY FOR FASTEST GROWING VENTURE CAPITAL INVESTMENT DOLLARS

NATIONAL VENTURE CAPITAL ASSOCIATION

BEST



PLACE TO LIVE IN 2020

LIVABILITY

TOP
15

BEST SMALL PLACES FOR BUSINESS & CAREERS

FORBES

TOP
10

BEST COLLEGE TOWN

LIVABILITY.COM

BEST



SMALL CITIES IN THE U.S

NATIONAL GEOGRAPHIC TRAVEL

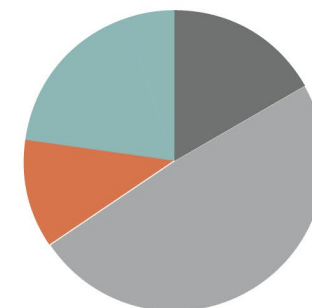
TOP
5

MOST GORGEOUS COLLEGE TOWNS IN AMERICA

MAKE IT BETTER



ROTUNDA AT UVA



Budget

- 49.1% | PATIENT SERVICES
- 17.2% | TUITION & FEES
- 22.6% | OTHER OPERATING REVENUES
- 11.1% | FEDERAL/STATE GRANTS & CONTRACTS

CHARLOTTESVILLE OVERVIEW

Charlottesville is the economic anchor for the Central Virginia region and powered by the strength of top-ranked University of Virginia. Bordered by the Blue Ridge Mountains to the west, Charlottesville is home to an exceptionally skilled and educated workforce, due to the presence of two community colleges and the University of Virginia. Nearly 40% of the Charlottesville MSA's population has at least a Bachelor's degree and the quality of the workforce has attracted both startups and major businesses to the region, creating a vibrant and diverse economy. A city deep in historic value, Charlottesville has raised three Presidents and is the home of the University of Virginia, founded by Thomas Jefferson in 1825 and consistently listed as one of the top five public universities in the country. Economic growth has been strong in the area over the last 20 years and with continued expansion of the University and the area's larger healthcare facilities, further commercial and residential growth has continued to expand outward from the core of the city.

17,000
UNDERGRADUATE
STUDENTS
(ON GROUNDS)

8,700
GRADUATE &
PROFESSIONAL
STUDENTS
(ON GROUNDS)

17,000
TOTAL STAFF

#1

HOSPITAL IN
VIRGINIA

NEWSWEEK, 2022

#1

BEST COLLEGE IN
VIRGINIA

MONEY MAGAZINE, 2022

#1

BEST VALUE PUBLIC
COLLEGE

PRINCETON REVIEW, 2022

#3

BEST PUBLIC
NATIONAL UNIVERSITY

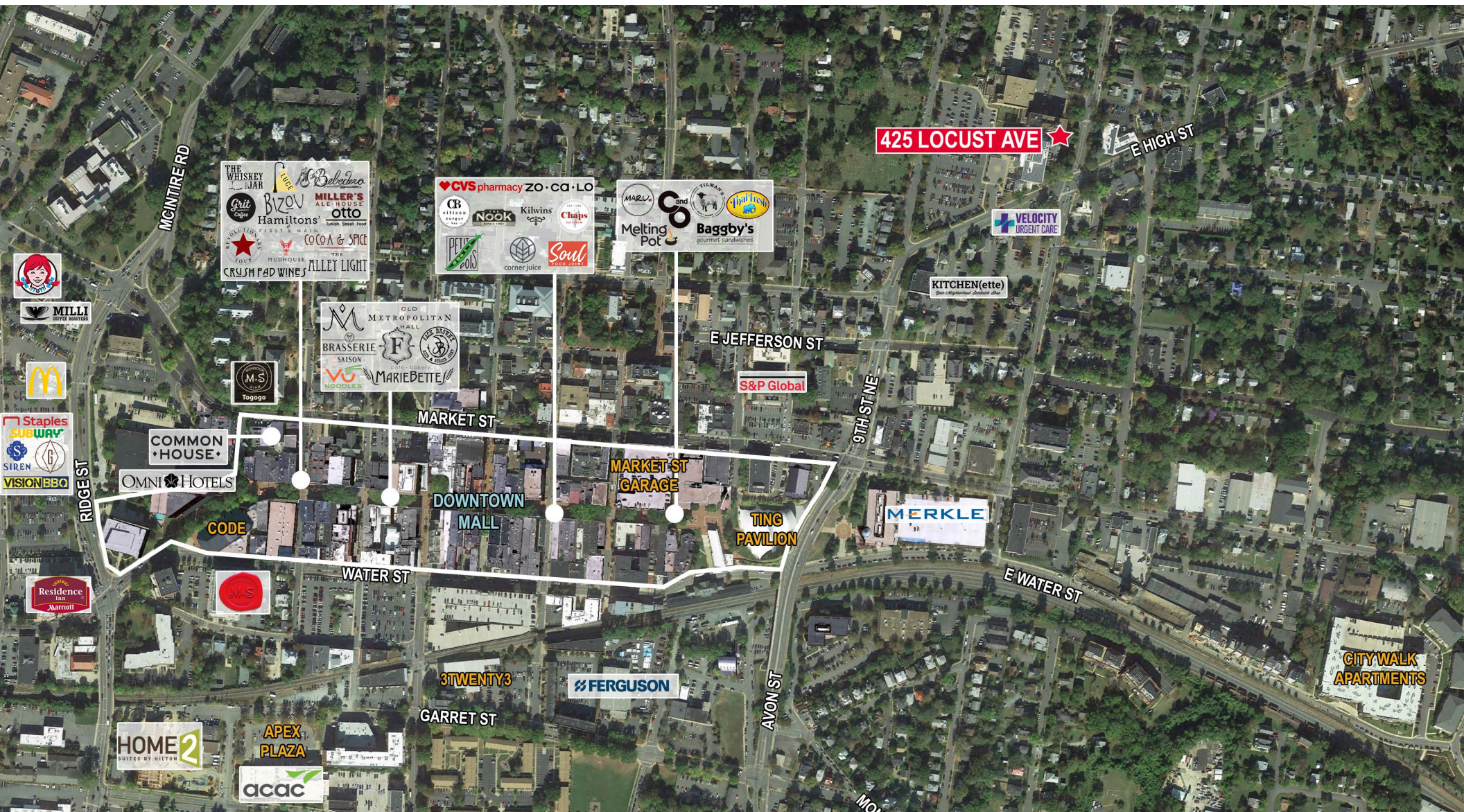
U.S. NEWS & WORLD REPORT, 2023

#1

BEST LAW SCHOOL

U.S. NEWS & WORLD REPORT, 2023

PROPERTY LOCATION





JENNY STONER
Senior Vice President
434 234 8417
jenny.stoner@thalhimer.com

JOHN PRITZLAFF
Senior Vice President
434 234 8416
john.pritzlaff@thalhimer.com

JOSI WILLIAMS
Associate
434 333 6991
josi.williams@thalhimer.com

Independently Owned and Operated / A Member of the Cushman & Wakefield Alliance

Cushman Wakefield | Thalhimer ©2025. No warranty or representation, express or implied, is made to the accuracy or completeness of the information contained herein, and same is submitted subject to errors, omissions, change of price, rental or other conditions, withdrawal without notice, and to any special listing conditions, imposed by the property owner(s). As applicable, we make no representation as to the condition of the property (or properties) in question.